



We make it visible.

## CALYPSO Tip: Add your company logo to reports.

By Phil Adair, Applications Engineer

Personalize your CALYPSO measurement reports by exchanging the ZEISS logo on the default report with your own company's image. Use the following procedure to replace the logo.

Need Support?

**For CALYPSO Support, call our software hotline:**

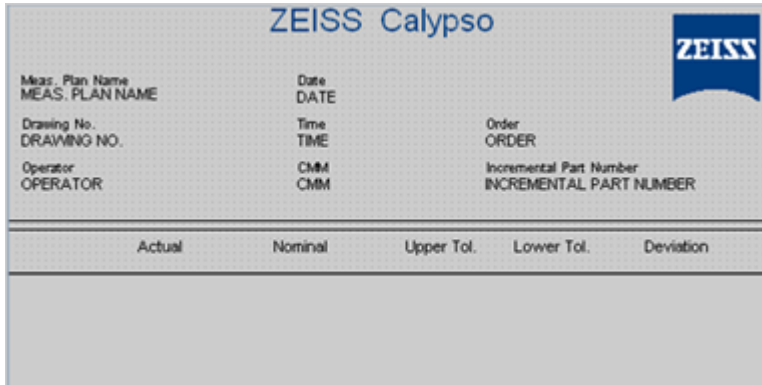
USA: (800) 327-9735

CA/MX: (763) 744-2600

U-SOFT: (440) 892-9277

Scanware: (607) 435-8128

Metrologic: (248) 426-9090



Carl Zeiss Default Report

### 1. Create your logo.

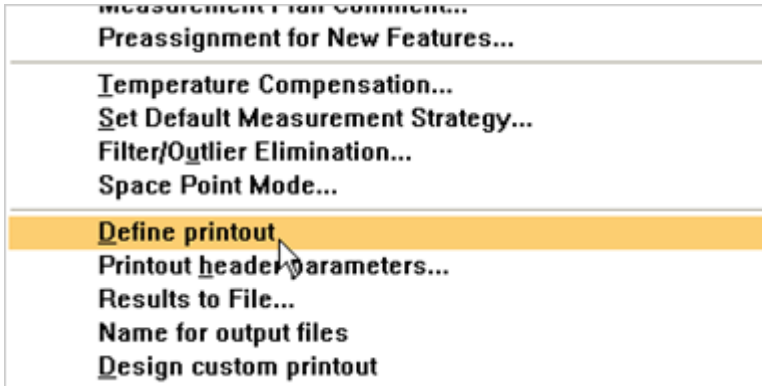
Using an image editing software, create a bitmap (.BMP) of your logo. The ZEISS logo on the default report is 60 x 60 pixels. While the logo can be any size, we recommend a maximum of 100 x 100 pixels. Save the logo file to your hard drive.

### 2. Make a copy of the report template folder.

The folder that contains the default report template is located in **zeiss\calypso\opt\om\protform**. Using Windows Explorer, go to the above location and make a copy the **default** folder and rename it to anything you want, such as **company\_report** (do not use spaces in the file name).

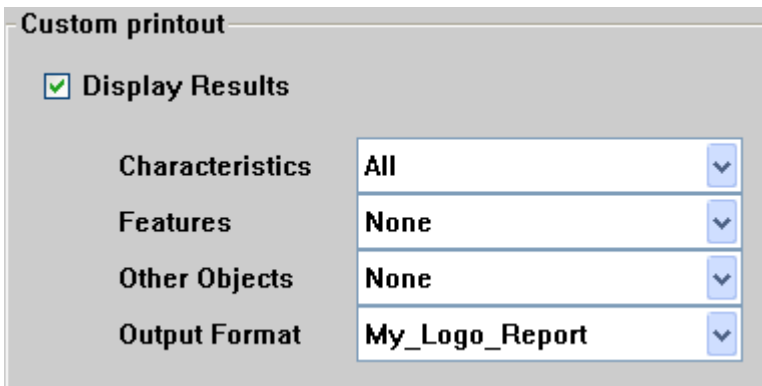
### 3. Point CALYPSO to your new report.

Go to the Resources menu in CALYPSO and select **Define printout**.



Define printout

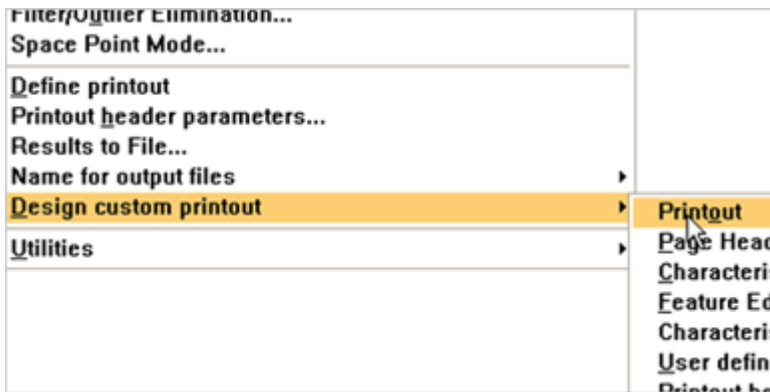
In the Custom printout area of the dialog box that appears, select your newly created folder from the **Output Format** drop-down dialog box, then click **OK**.



Custom printout within the Define printout dialog box

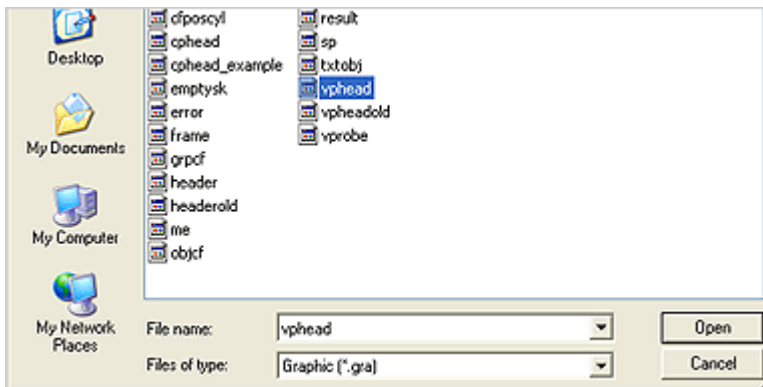
#### 4. Open your report.

Go to the Resources menu , choose **Design custom printout**, then **Printout** to access the Printout format editor.



Design custom printout and printout selection

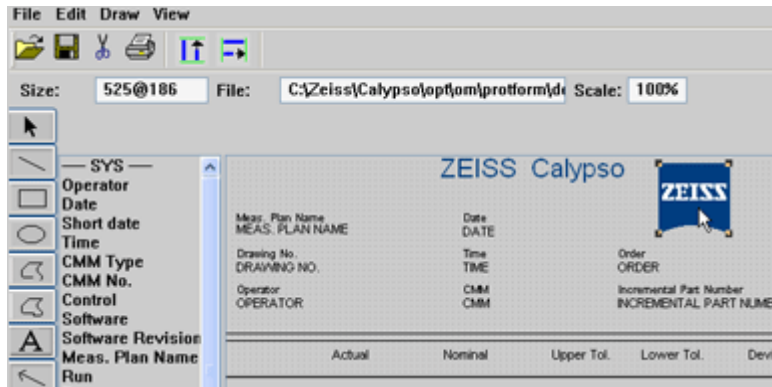
Choose **File, Open**, then select **vphead**.



vphead is the header file within the report

#### 5. Delete the ZEISS logo from your report.

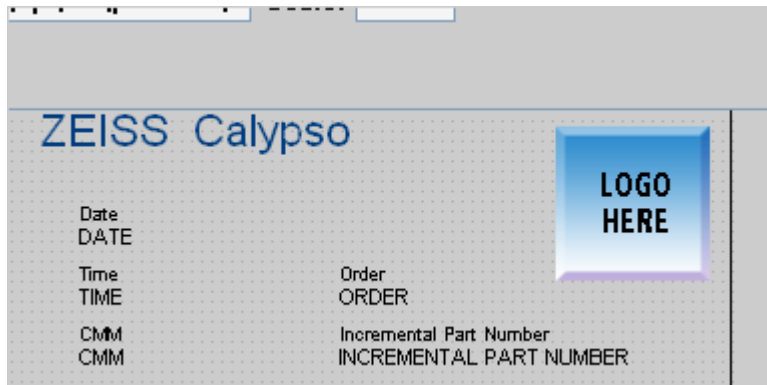
In the Printout format editor, choose the **Select arrow** icon (at left), click on the existing ZEISS logo to select it, then press the **Delete** key to remove it from the report. Note: If you want to have the ZEISS logo on the report in addition to your logo, simply leave it in place or move it to create room for your logo.



Select and delete the ZEISS logo from the report

## 6. Insert your company's logo file.

Now choose the **Graphic** icon (tree image, at left) and click your mouse in the area of the report where you want the logo to appear. From the **Select One File** dialog box, choose **From File**. Select your .BMP logo file from the hard drive, then choose **Open**.



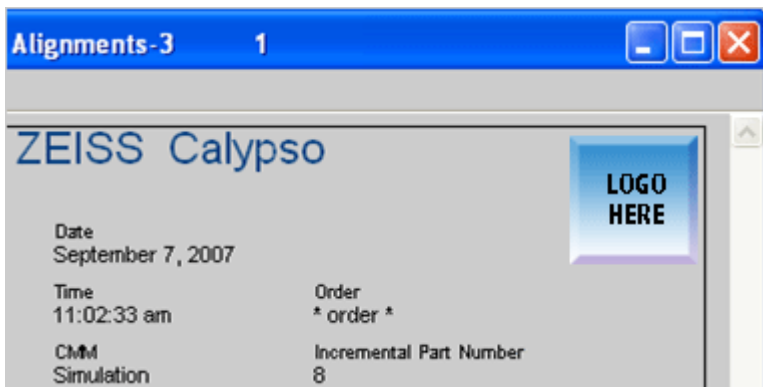
Your logo can be placed anywhere within the header.

## 7. Fine-tune the location of your logo on the report.

Choose the **Select arrow** icon, click on the newly added logo and drag it to the exact position where you want it on the report. When finished, choose **File**, then **Save** from the Printout format editor to save your changes to the custom report (overwrite the existing report if asked).

### 8. Use your custom report.

Run your program and display results to the custom printout. Results will be output using the new, custom report. Using this procedure, you can create additional custom reports.



With your custom report, your results now display your logo.

Note: If you ever want to return to our default report, simply go to the Resources menu in CALYPSO and select **Define Printout**. In the Custom printout area of the Define printout dialog box, select **default** from the drop-down dialog box. Then click **OK**.