



We make it visible.

CALYPSO Tip: Copy Feature or Characteristic Properties

By Phil Adair, Applications Engineer

Use **CALYPSO Transfer format** to select and copy specific properties of a feature or characteristic to other features or characteristics. The tool offers a powerful way to copy and paste formatting from one item to another. Below are the steps for using this tool either for features or characteristics. In our example below, we show how we copied a strategy created for probing a feature to additional features.

Copying properties of a feature to other features

1. Click on the feature from which you want to copy properties.
2. Click on the Transfer format icon in the upper toolbar.
3. Select the properties that you want to copy to other features.
4. Select the features to which you want to copy the properties (multiple selection with the Ctrl key).
5. Click OK.

Need Support?

**For CALYPSO Support, call
our software hotline:**

USA: (800) 327-9735

CA/MX: (763) 744-2600

U-SOFT: (440) 892-9277

Scanware: (607) 435-8128

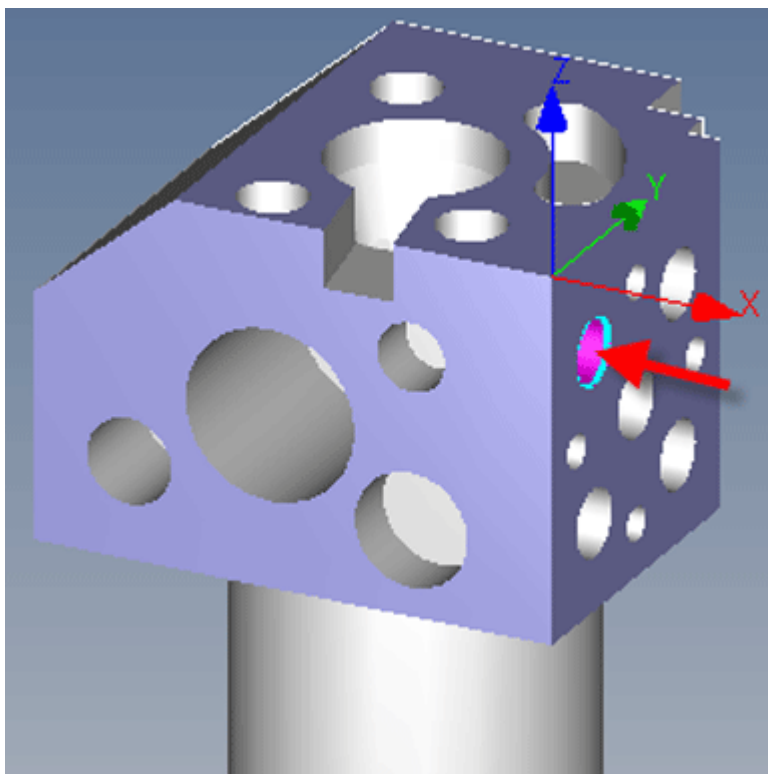
Metrologic: (248) 426-9090

Copying properties of characteristics into other characteristics

1. Open the list of characteristics.
2. Highlight the characteristic from which you want to copy properties.
3. Click on the Transfer format icon in the upper toolbar. The Assign Characteristics to Features dialog box appears on the screen.
4. Click on the characteristics icon at the bottom of the window. The Copy properties from <characteristic name> window appears on the screen.
5. Activate the check boxes of the properties that you want to copy to other characteristics.
6. Select the characteristics to which you want to copy properties.
7. Click OK.
- 8.

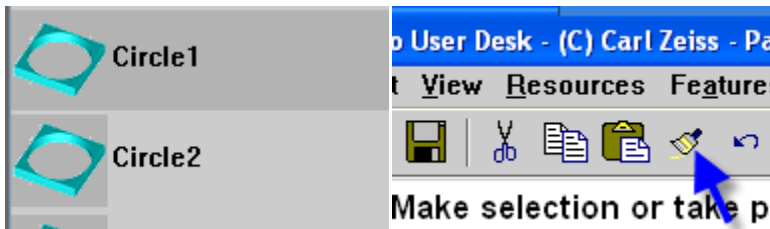
Example: Copying a Probing Strategy

In our example, we have four corner holes from a CAD model as features and we want to use the same probing strategy for all four. Initially, we went into the strategy of hole number one (indicated by the red arrow) and changed it so that we would scan 2000 points to measure the hole. Here's how we transferred this same strategy to the other three holes.



CAD Model (Hole number one shown with red arrow).

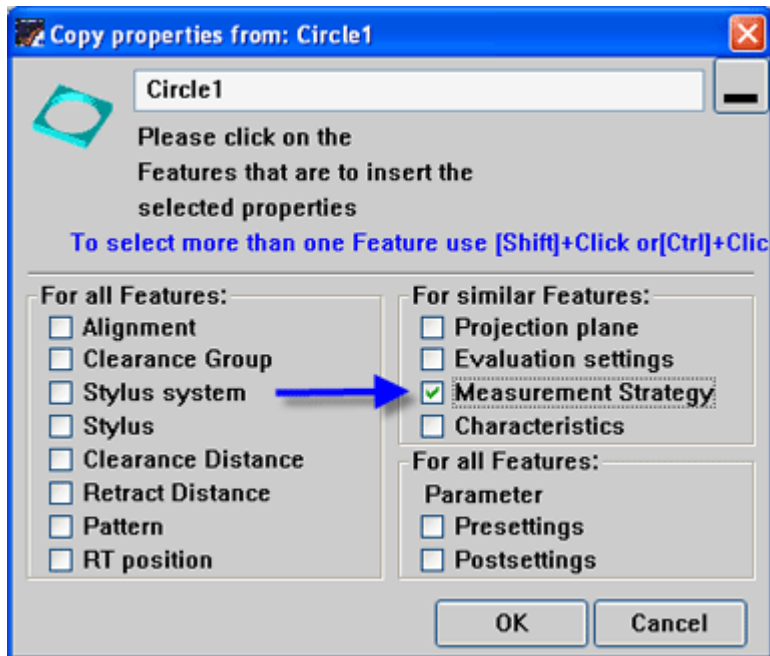
First, we highlighted the feature—hole number one. Then we clicked the Transfer format icon located on the upper toolbar in CALYPSO.



Hole number one selected

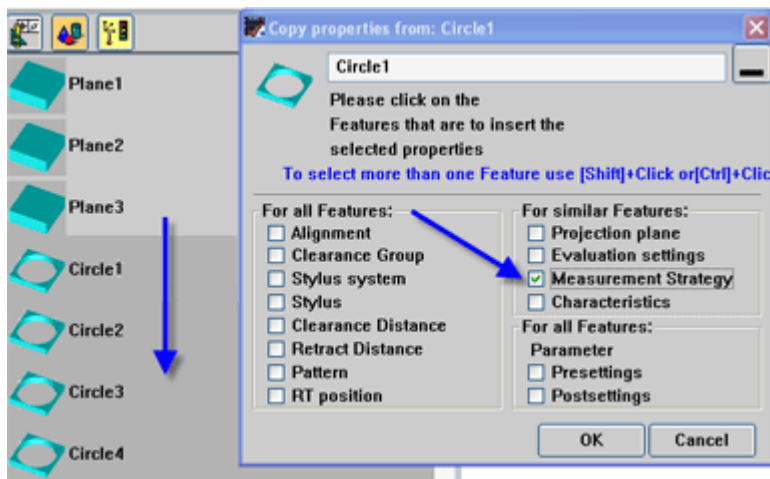
Selecting Transfer format icon

From the Copy properties menu that appeared, we selected the Measurement Strategy checkbox.



Copy properties options that appear for features.

With the Copy properties menu still open, we selected the other three hole features behind it in CALYPSO.



We select the features behind the Copy properties menu.

Then on the Copy properties menu, we clicked OK to complete the transfer. Looking at the individual strategies of the other three holes, we could see that the strategy had been copied (transferred) to holes two, three, and four.