

# CIRRUS Anterior Segment Premier Module

The first retinal OCT with full anterior chamber imaging and measurements

The CIRRUS™ Anterior Segment Premier Module expands the capabilities of your CIRRUS HD-OCT from ZEISS to include comprehensive imaging and quantification of the anterior segment for refractive surgery planning and follow-up, corneal evaluation, and glaucoma assessment:

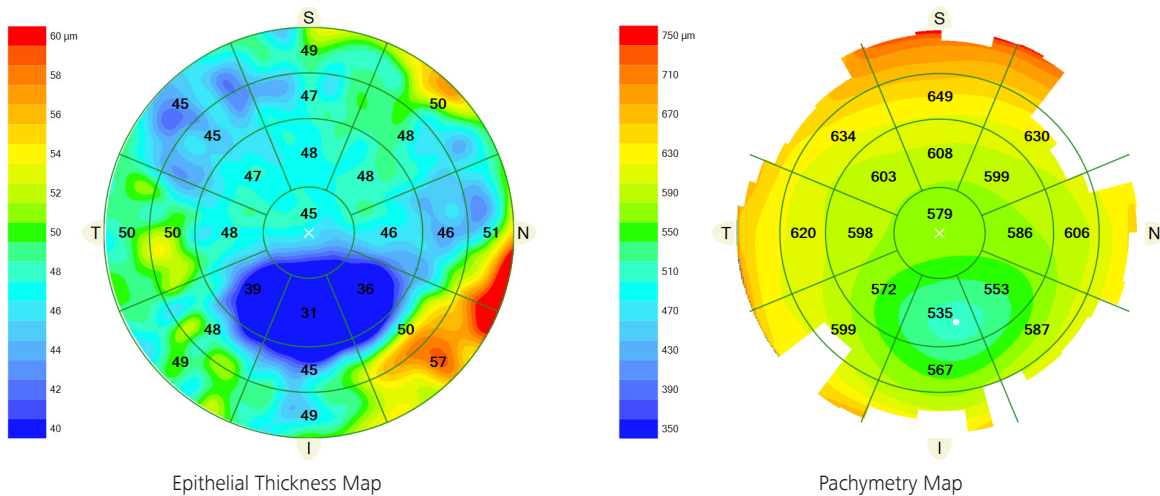
- 9-mm epithelial thickness and pachymetry mapping
- High-definition corneal imaging with measurement tools for flap thickness and residual stromal bed
- ChamberView™ full anterior chamber imaging with measurement tools
- Angle imaging and measurement tools for angle closure glaucoma assessment

Available with CIRRUS HD-OCT 11.5 software

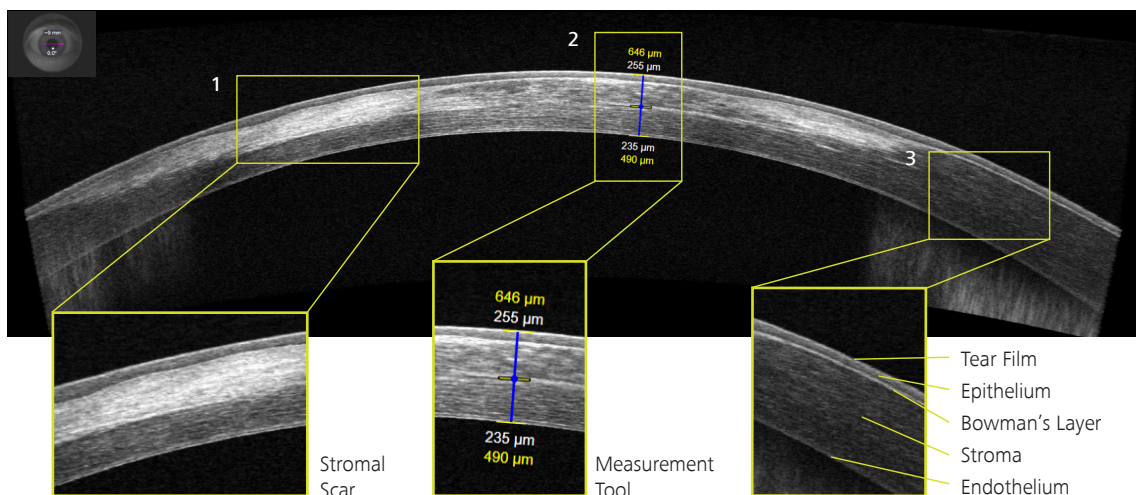
## Refractive and Cornea

Studies suggest that corneal epithelial thickness mapping (ETM) can be useful for pre- and post-operative refractive surgery assessment and may improve detection of form fruste keratoconus.<sup>1</sup> ETM can also provide a baseline assessment of the patient's corneal epithelium prior to initiating dry eye therapy or to monitor corneal health for contact lenses patients. CIRRUS HD-OCT offers a high-density 9-mm Epithelial Thickness Map and Pachymetry Map, each with over 24,000 data points from 24 radial OCT b-scans, which means less interpolation and data smoothing.

9-mm Epithelial Thickness Map and Pachymetry Map of keratoconus highlights localized epithelial thinning.



15.5 mm high-definition cornea imaging with semi-automated measurement tools for flap thickness and residual stromal bed.



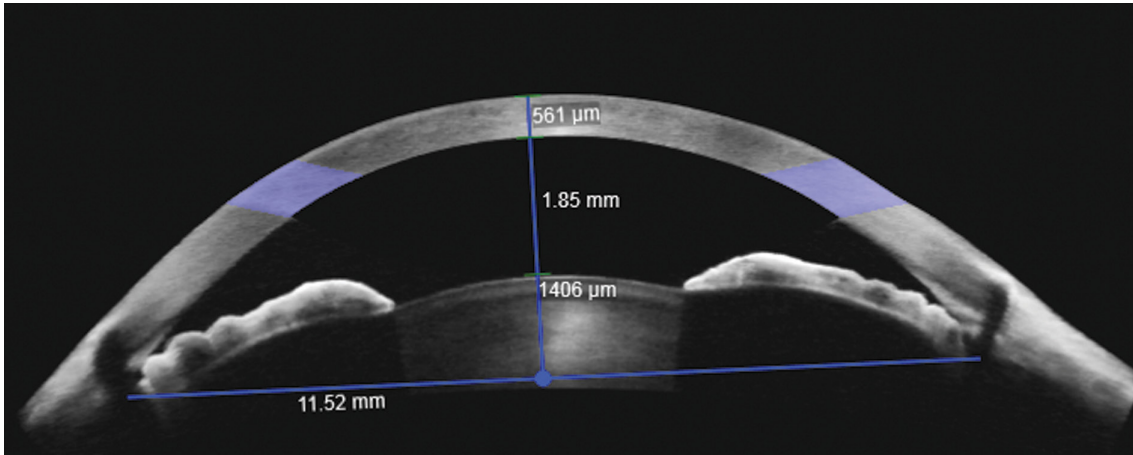
1. Journal of Cataract & Refractive Surgery Volume 41, Issue 4, April 2015, Pages 812-820



# Anterior Chamber and Angle

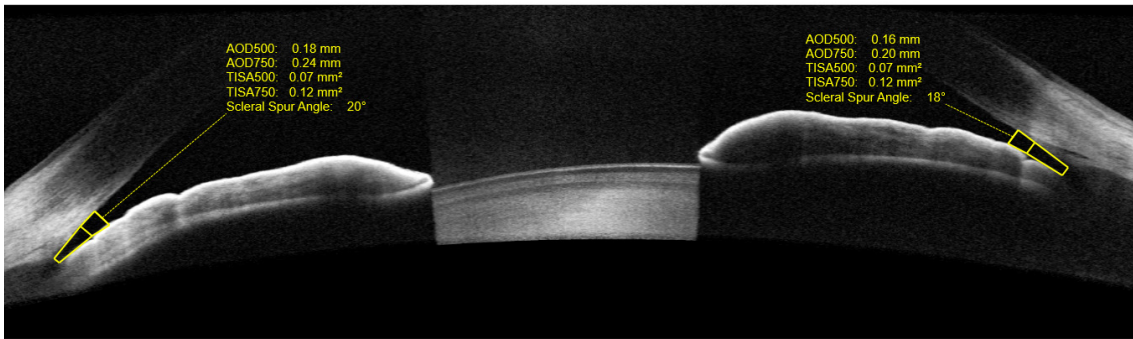
A non-contact method to help identify patients at risk of angle closure glaucoma

ChamberView — A patented 15.5 mm wide view of the entire anterior chamber with objective tools for measuring anterior segment ocular structures.



ChamberView image of narrow angles

Wide Angle to Angle Scan - Provides exquisite detail of the iridocorneal angle and include measurement tools for Angle Opening Distance (AOD500/750) and Trabecular Iris Space Area (TISA500/750) to quantify and track degree of angle closure.



Wide Angle to Angle Scan of Narrow Angles

Anterior Segment Premier Module with External Lens Kit		Measurement Capabilities
ChamberView™	15.5 mm x 5.8 mm (max.)	Anterior Chamber Depth, Angle to Angle Distance, Lens Vault, Chamber Area, Corneal Thickness, Angle and Caliper Tools
Wide Angle to Angle	15.5 mm x 2.9 mm	Angle Opening Distance (AOD500/750), Trabecular Iris Space Area (TISA 500/750), Scleral Spur Angle, Angle and Caliper Tools
HD Cornea	9 mm x 2 mm	Residual Stromal Thickness, Caliper Tools
Pachymetry Map	9 mm diameter	Sector Thickness values, Minimum Thickness, Asymmetry
Epithelial Thickness Map	9 mm diameter	Sector Thickness Values, Minimum Thickness, Asymmetry

Anterior Segment Basic Module includes:

Anterior Segment 5-Line Raster, Anterior Segment Cube 512x128, HD Angle scans

CIR-11038 Printed in the United States. CZ-III/2019 United States edition. Only for sale in selected countries. The contents of the flyer may differ from the current status of approval of the product or service offering in your country. Please contact our regional representatives for more information. Subject to changes in design and scope of delivery and due to ongoing technical development. CIRRUS and ChamberView are either trademarks or registered trademarks of Carl Zeiss Meditec AG or other companies of the ZEISS Group in Germany and/or other countries. © Carl Zeiss Meditec, Inc., 2019. All rights reserved.