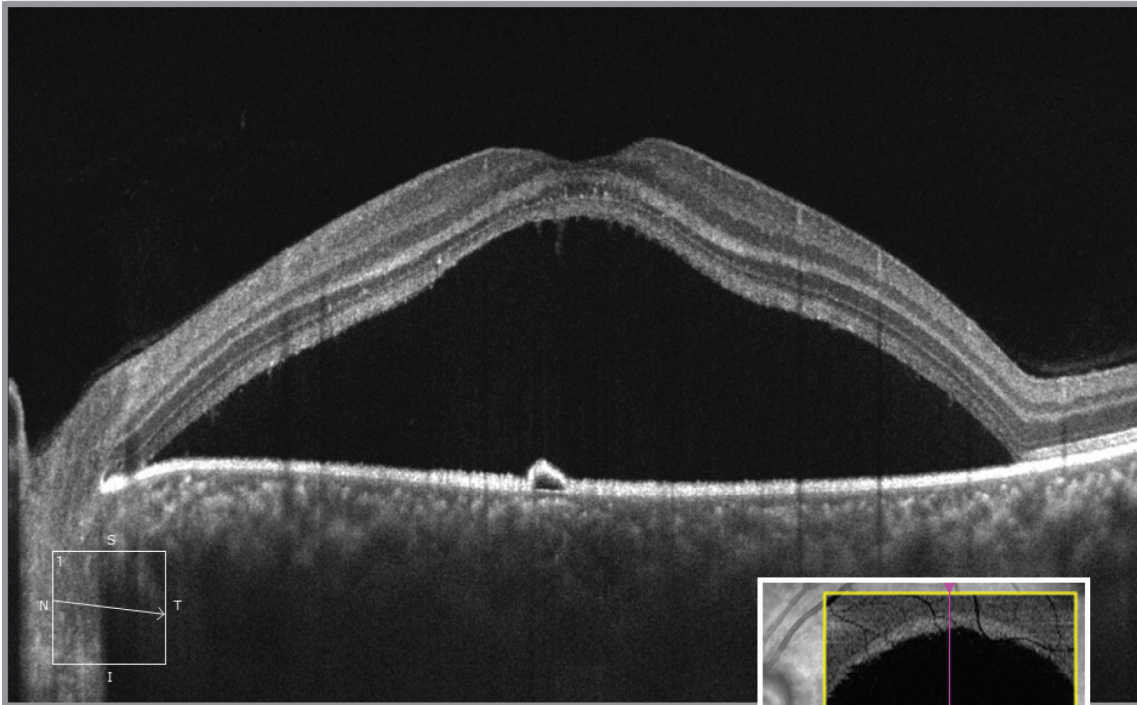


FEATURED CASE BY ZEISS — RETINOPATHY



DIAGNOSIS

Central Serous Retinopathy

SUMMARY

A 41-year-old, African-American male presented with worsening blurry and darkened central vision of two weeks duration. After clinical and imaging evaluation, the patient was diagnosed with central serous retinopathy in the left eye. The high-resolution OCT image clearly shows substantial subfoveal fluid. The angiogram reveals a classic area of central pinpoint leakage with smokestack pattern in later phases. En face OCT shows slab area corresponding to the central pigment epithelial detachment (PED).

Images Courtesy of

North Carolina Retina Associates | Vivian T. Nguyen, BS

Captured with ZEISS CIRRUS™ HD-OCT

(1) Angiogram reveals central pinpoint leakage with smokestack pattern in later phases; (2) raster scan shows subfoveal fluid, while the En face OCT shows the slab area corresponding to the PED seen in B-scan



We make it visible.