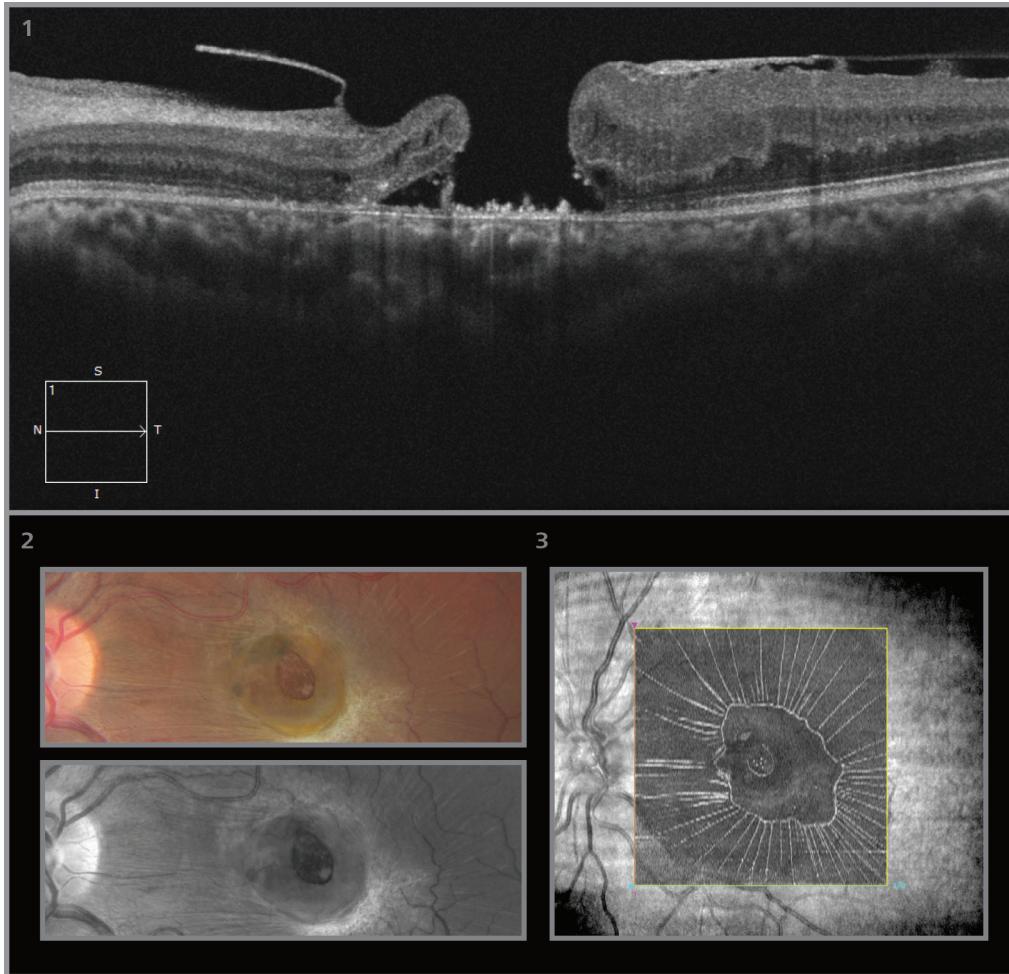


FEATURE CASE — VISUALIZE RETINAL DAMAGE



DIAGNOSIS

Traumatic Macular Hole

SUMMARY

Patient suffered a macular hole secondary to blunt trauma. The brilliant B-scan acquired on the CIRRUS™ HD-OCT allows for clear visualization of the macular hole with overlying epiretinal membrane. These data also show neuroretinal thinning on the nasal side of the hole with hypertrophy of the retinal pigment epithelium within the hole. The fundus photographs show amount of pigment loss or RPE damage along with retinal striae. The en face image provides an additional way to visualize the retinal damage, more clearly defining the retinal striae in the internal limiting membrane radiating out from the macular hole.

Images Courtesy of

Flaum Eye Institute University of Rochester

David A. DiLoreto, Jr., MD, PhD | Taylor Pannell, CRA

Captured with ZEISS CIRRUS™ HD-OCT

(1) Hi-definition OCT B-scan; (2) color and red-free fundus images; (3) En face ILM overlay



We make it visible.