



Installation Guide

AxioVision Rel. 4.8.2 - SP2

000000-2000-655
printed 06.2012

Carl Zeiss Microscopy GmbH

Carl-Zeiss-Promenade 10
07740 Jena, Germany

microscopy@zeiss.com
www.zeiss.com/microscopy



Carl Zeiss Microscopy GmbH
Königsallee 9-21
37081 Göttingen, Germany

© Carl Zeiss Microscopy GmbH, 1999

www.zeiss.de/axiovision

Microsoft, Windows, Windows XP and Windows 7 are registered trademarks of Microsoft Corporation in the United States and/or other countries.

Intel, Intel Xeon and Pentium are trademarks or registered trademarks of Intel Corporation or its subsidiaries in the United States and other countries.

Table of Contents

Carl Zeiss AxioVision Product Suite

1	System Requirements	1
1.1	General System Requirements	1
1.2	Special minimum requirements of individual modules	2
	(in addition to the general minimum requirements)	2
2	Important Notes	5
3	Backup Copies	5
4	Installation Procedure	6
4.1	Further Information Concerning the Installation	12
	List of the available products	12
	Carl Zeiss AxioCam Installation	13
	Carl Zeiss AxioCam IC Installation	14
	Canon SDK Installation	16
	ASSAYbuilder Installation	16
	3rd party Cameras Installation	17
	<i>PVCam (Roper Scientific®)</i>	18
	<i>Hamamatsu</i>	19
	<i>BMC Fast Acquisition</i>	19
	<i>Laser AOTF Driver</i>	20
	Acrobat Reader Installation	20

Carl Zeiss AxioVision Product Suite

1 System Requirements

1.1 General System Requirements

Minimum system requirements	Recommended system requirements
Intel® Pentium® 4 processor, 1,7 GHz	Intel® Xeon® Quad Core 2,66 GHz
Intel chipsets i845, i865G, i915G, i925X, Intel 945G, Intel Q965, Intel iQ35, Intel iQ45	Intel chipsets i915G, Intel 945G, Intel Q965, Intel iQ35, Intel iQ45
1 GB RAM	2 GB RAM
Graphics interface PCI xPress x16	
Graphics adapter 1280 x 1024 resolutions, 32 bit real color, 64 MB RAM, DirectX 8.0 or higher	ATI Fire GL graphics adapter 1280 x 1024 resolution, 32 Bit real color, 256 MB RAM, DirectX 8.0 or higher
Onboard graphics only in combination with the Intel chip sets i845G, i865G, i915G, Intel 945G, Intel Q965, Intel iQ35, Intel iQ45	Onboard graphics only in combination with the Intel chip sets i915G, Intel 945G, Intel Q965, Intel iQ35, Intel iQ45
Monitor 17" CRT or 17" TFT	Monitor 19" TFT
Hard disk 40 GB ATA 100, DVD-ROM drive	Hard disk 320 GB S-ATA II, DVD-RW drive
1 free PCI slot 5 V, 32 bit (PCI specification 2.1) non shared interrupt, to insert one camera interface	2 free PCI slot 3.3 V or 5V, 32 Bit (PCI specification 2.1) non shared interrupt, to insert one camera interface
2 serial interfaces (COM1 und COM2)	
2 USB interfaces	4 USB interfaces

Operating system Microsoft® Windows® 7 x 32 Ultimate (Multilingual). Microsoft® Windows® XP Professional SP2–SP3 is supported as well (original version German or Multilanguage). No special customer adapted version.
--

The user must be logged on as a member of the local "user" group
--

For the software installation procedure local administrator rights are required

Please pay attention, that higher hardware requirements of modules, options, framegrabbers or cameras could be needed.

1.2 Special minimum requirements of individual modules

(in addition to the general minimum requirements)

Cell Observer®, consisting of: Multichannel Fluorescence, Time Lapse, Z-Stack, Mark&Find, ApoTome

Minimum system requirements	Recommended system requirements
Intel Pentium 4 processor, 1,7 GHz	Intel Xeon Quad Core 2,66 GHz
Intel chipsets i845, i865G, i915G, i925X, Intel 945G, Intel Q965, Intel iQ35, Intel iQ45	Intel chipsets i915G, Intel 945G, Intel Q965, Intel iQ35, Intel iQ45
1 GB RAM	4 GB RAM
Graphics interface PCI xPress x16	
Graphics adapter 1280 x 1024 resolution, 32 bit real color, 64 MB RAM, DirectX 8.0 or higher	ATI Fire GL Graphics adapter 1280 x 1024 resolution, 32 bit real color, 128 MB RAM, DirectX 8.0 or higher
Onboard graphics only in combination with the Intel chipsets i845G, i865G, i915G, Intel 945G, Intel Q965, Intel iQ35, Intel iQ45	Onboard graphics only in combination with the Intel chipsets i915G, Intel 945G, Intel Q965, Intel iQ35, Intel iQ45
Monitor 17" CRT or 17" TFT	Monitor 19" TFT
Hard disk 40 GB ATA 100, DVD-ROM drive	Hard disk 80 GB S-ATA II, DVD-RW drive

1 free PCI slot 5 V, 32 Bit (PCI specification 2.1) non shared interrupt, to insert one camera interface	2 free PCI slots 3.3 V or 5V, 32 Bit (PCI specification 2.1) non shared interrupt, to insert one camera interface
2 serial interfaces (COM1 and COM2)	
2 USB interfaces	4 USB interfaces
Operating system Microsoft® Windows® 7 x 32 Ultimate (Multilingual). Microsoft® Windows® XP Professional SP2–SP3 is supported as well (original version German or Multilanguage). No special customer adapted version.	
The user must be logged on as a member of the local "user" group	
For the software installation procedure local administrator rights are required	

Cell Observer® HS, as above, but with the modules Fast Acquisition, Physiology or Dual Camera

Minimum system requirements	Recommended system requirements
Intel Xeon processor 2,8GHz Single Core or Dual Core 2 GHz	Intel Xeon Quad Core 2,66 GHz
3 GB RAM	4 GB RAM
1x hard disk 160 GB UDMA	1x hard disk 160 GB S-ATA II
2x hard disk 160 GB S-ATA as RAID-0 array	2x hard disk 250 GB S-ATA II as RAID-0 array
IEEE 1394 a interface (IEEE 1394 a interfaces with two separate FireWire ports for Dual Camera module)	

3D Deconvolution

Minimum system requirements	Recommended system requirements
Intel processor, 2.8 GHz Single Core oder Dual Core 2 GHz	Intel Xeon Quad Core 2,66 GHz
2 GB RAM	4 GB RAM
Hard disk 80 GB UDMA	1x hard disk 160 GB S-ATA II
	2x hard disk 250 GB S-ATA II as RAID-0 array

Inside4D and 3D Measure

Minimum system requirements	Recommended system requirements
Intel processor, 1,7 GHz	Intel Xeon Quad Core 2,66 GHz
Graphics adapter 1280 x 1024 resolution, 32 bit real color, 64 MB RAM, DirectX 8.0 or higher, OpenGL 1.3, as an interface for the PCI xPress x16-slot	ATI Fire GL Graphics adapter 1920 x 1200 resolution, 32 bit real color, 512 MB RAM, DirectX 9.0 or higher, OpenGL 1.3, as an interface for the PCI xPress x16-slot, 2 DVI-Dual Link output
	Monitor 24" TFT
2 GB RAM	4 GB RAM
	1x hard disk 160 GB S-ATA II
	2x hard disk 160 GB S-ATA II as RAID-0 array

MosaiX (also in combination with the modules Particle Analyzer Projects and NMI)

Minimum system requirements	Recommended system requirements
Intel processor, 2,33 GHz Core 2Duo	Intel Xeon Quad Core 2,66 GHz
	2x monitor 20" TFT
2 GB RAM	4 GB RAM
1x hard disk 160 GB S-ATA II	1x hard disk 160 GB S-ATA II
	2x hard disk 250 GB S-ATA II as RAID-0 array

2 Important Notes

For installation under Microsoft Windows XP Professional and Microsoft Windows 7 you need to log on with administrator privileges. If you do not have access to administrator rights on your computer, please contact your system administrator.

To work with the AxioVision software, you need at least to log on with "user" privileges.



Please ensure, that all PCI bus interface cards (for camera or framegrabber) are fitted into your computer before starting the installation. Ensure also that all cameras are connected.



After starting your system one or more **Found New Hardware Wizard** dialog windows appear on your screen. Please click **Cancel** to close the dialog window.




Please ensure, that **no** USB dongle is plugged in the computer during installation.

3 Backup Copies

We strongly recommend that all users save the data they create, such as images, measurement data, archives, reports, forms and documents, at regular intervals on an external medium. Otherwise it cannot be excluded that access to this data may be lost as a result of operational errors or hardware defects. Carl Zeiss accepts no liability for consequential damage resulting from insufficient data protection.

4 Installation Procedure

After you have inserted the DVD into the DVD drive the installation starts automatically. If the automatic start function (autorun) has been switched off on your system you must start the installation program manually as follows:

Double-click on the desktop icon **My Computer** 

Double-click on the **DVD-ROM Drive** icon 



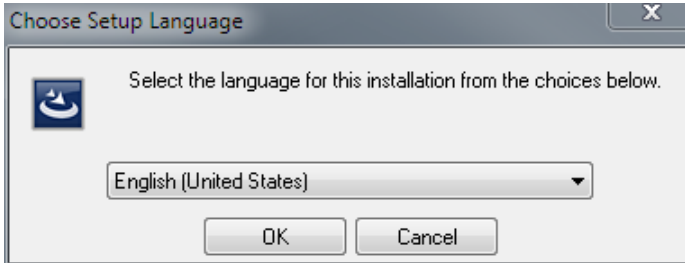
The installation procedure in this Installation Guide is displayed with screenshots of Microsoft Windows 7.

After the start procedure (automatically resp. manually) this dialog window will be displayed on your system:



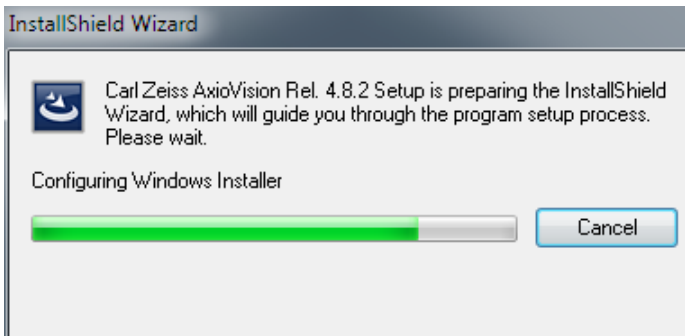
AxioVision Product Suite

In the installation menu click on the **AxioVision Product Suite** button. The following dialog window will be displayed:



Select the language you want to install and click **OK**.

If you have not installed the actual version of Microsoft .NET Framework on your system, this installation will be started now:



In the dialog window **Customer Information** enter user name and organization.

Customer Information

Please enter your information.

User Name:
Carl Zeiss AG

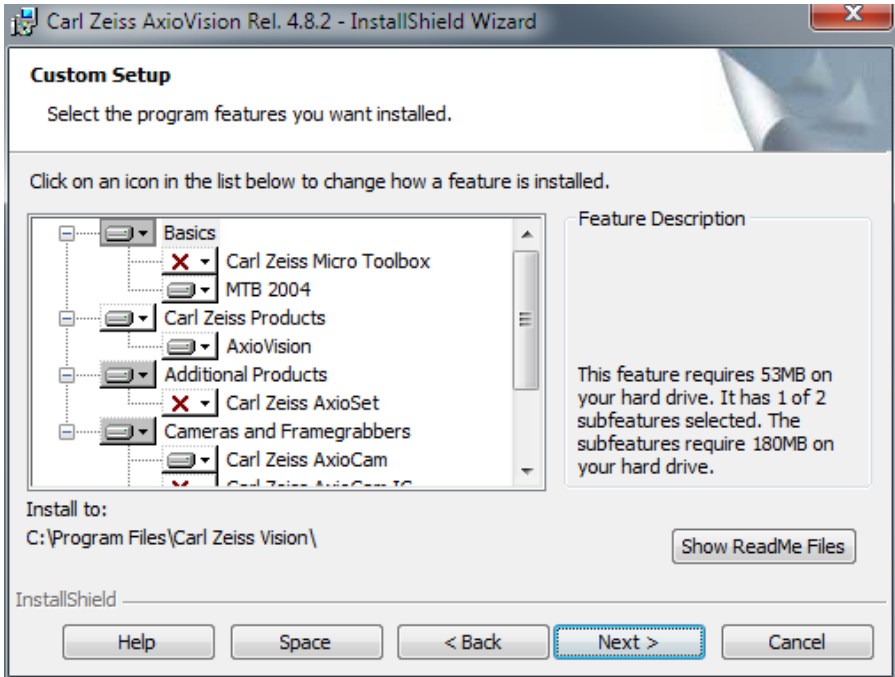
Organization:
Carl Zeiss


InstallShield

Next > Cancel

Click **Next**, when you have entered your customer information.

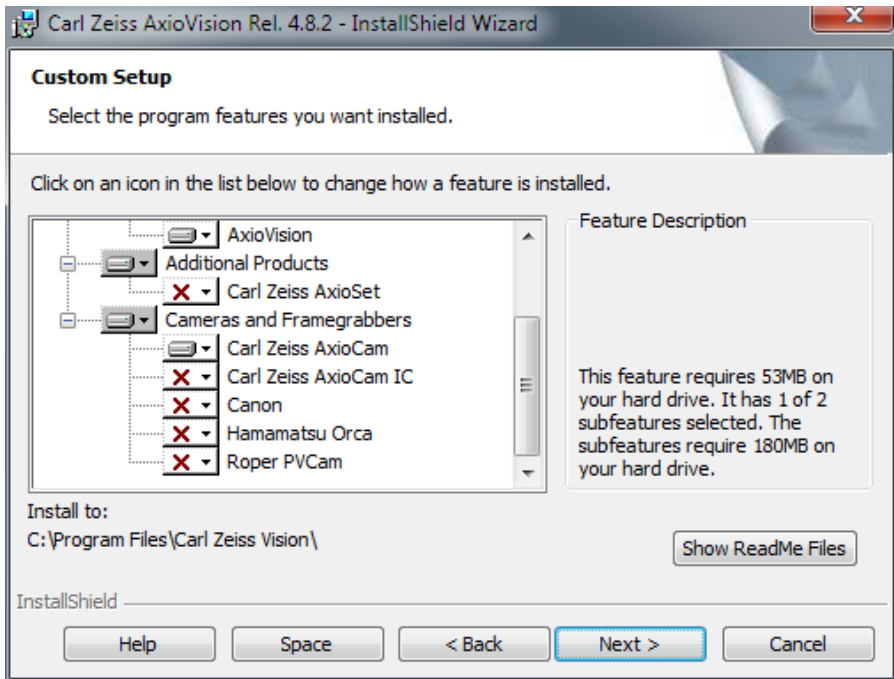
Follow the instructions of the setup program until the **Custom Setup** dialog window is displayed. In this dialog window, listing of available products is displayed depending on your license. Please select the products to be installed:



It is recommended that you carefully read the **ReadMe** files. Clicking on the **Show ReadMe Files** button will display the text window on your monitor, containing the files that provide complementary or late-breaking information concerning all product installations. The text window can be closed by selecting this window's  symbol. The installation procedure will continue.

Click **Next**. In the following dialog window click **Install** to start the installation. Please follow the further instructions of the setup program.

At the end of the installation the **InstallShield Wizard Completed** dialog window will be displayed.



Click **Finish** in this dialog window to complete the installation.

The installation is now finished. The system prompts for a restart, depending on the used operating system.



This Note affects only users which already have an older version of AxioVision (AxioVision from Release 3.x up to Release 4.4).

At the end of the installation you can import the license file of an older version of AxioVision. To do so click on the "Import license files" button and select the license file you want to import (*.lic, e.g. AxioVs40.lic).

Notes:

- To work with the program, you need to log on at least as a member of the local "User" group.
- On your desktop double-click on one of the icons of the software you

want to start, e.g.  for the AxioVision software.



- Double-click on this icon to open the **Microscope Configuration**. This configuration is only available for the microscopes Axioplan, Axiovert and Axioskop.



To operate with the Carl Zeiss Axiovert the **Microscope Configuration** (Carl Zeiss Micro Toolbox) has to be installed.



- Double-click on this icon to open the **MTB2004 Configuration**. This configuration is available for all the microscopes that are **not** listed under Microscope Configuration.

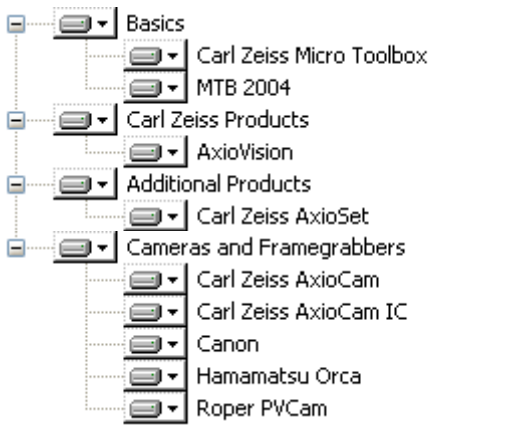


- Double-click on this icon to open the list of the available documentation.

4.1 Further Information Concerning the Installation

The following figure displays a list of all the available products.

List of the available products

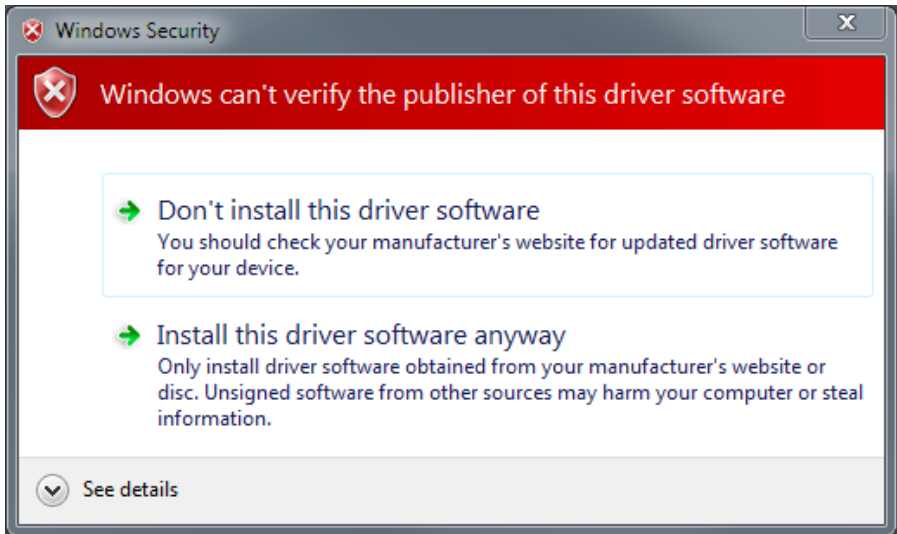


The volume of your list might be different, because only those products will be displayed, which are included in your license.

Note:

- During the installation of the cameras and framegrabbers , AxioVision Cumulus and Acrobat® Reader® the following dialog windows are displayed. Due to technical reasons a user input is required to install these products.

Carl Zeiss AxioCam Installation



During the installation of the Carl Zeiss AxioCam camera (in this example the AxioCam MRC5) the dialog window **Windows Security** appears on your screen. (Corresponding dialog windows are displayed for the other Carl Zeiss AxioCam cameras.)

Click **Continue Anyway** to continue the installation.

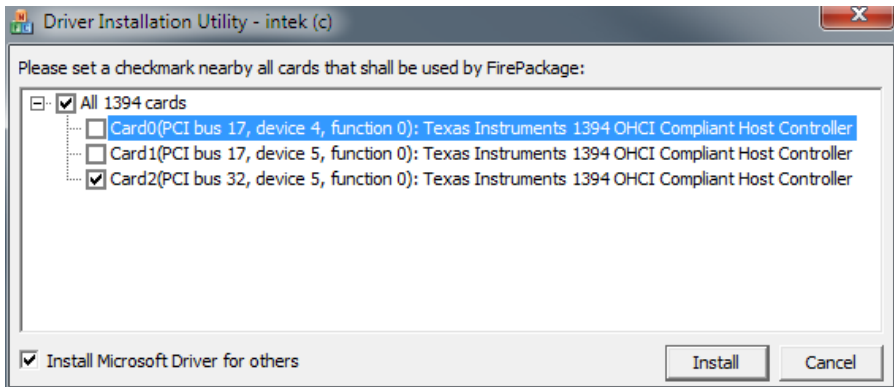
A detailed installation and user description can be found on the DVD in PDF format in the folder "*Documentation\Carl Zeiss AxioCam*".

Carl Zeiss AxioCam IC Installation

If you use the standard configuration, composed of "onboard" FireWire slot as well as of one FireWire PCI-Bus interface board, please follow the below-mentioned instructions.

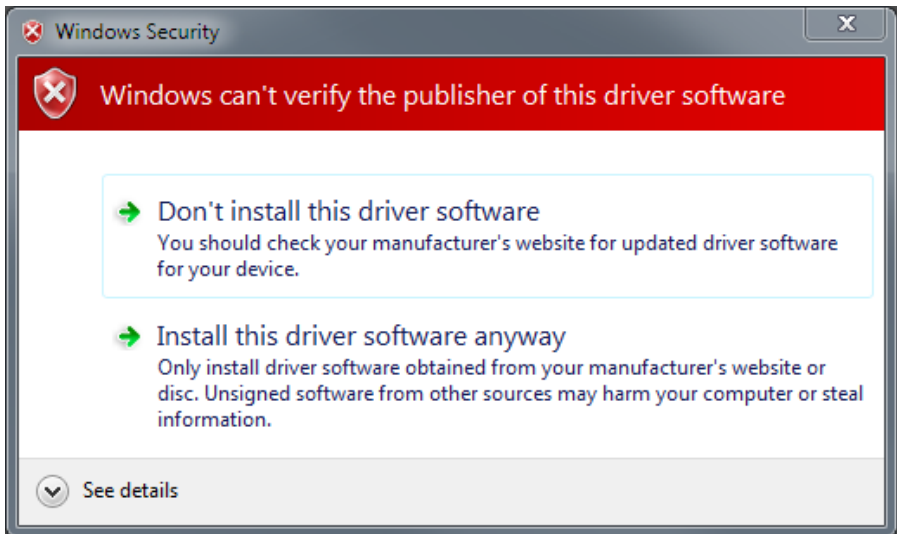
For further information please read our manual on the installation DVD under "*Documentation\AxioCam IC\AxioCam IC Installation+Reference.PDF*".

During installation the **Driver Installation Utility** dialog window will be displayed.



Execute the settings, as indicated in the screenshot above and click **Install**.

Now the dialog window **Windows Security** will be displayed.



➤ Click on **Continue Anyway**.

Canon SDK Installation

During installation the entry **Canon SDK** has to be selected in the **List of the available products** to ensure that all necessary driver files will be installed.



When the camera is connected and switched on, the generic driver for the Canon cameras is automatically installed.

ASSAYbuilder Installation

Click on  in the start-up monitor to start the installation.

First components of the operating system will be checked and updated, if necessary. Follow the instructions of the setup program. Thereafter the installation of the ASSAYbuilder module starts automatically. Follow the instructions of the setup program as well.

3rd party Cameras Installation

3rd party Drivers

If you want to install other cameras, please click on [3rd party Drivers](#) in the start-up monitor. The following dialog window opens:



Here select the camera you want to install.

PVCam (Roper Scientific®)



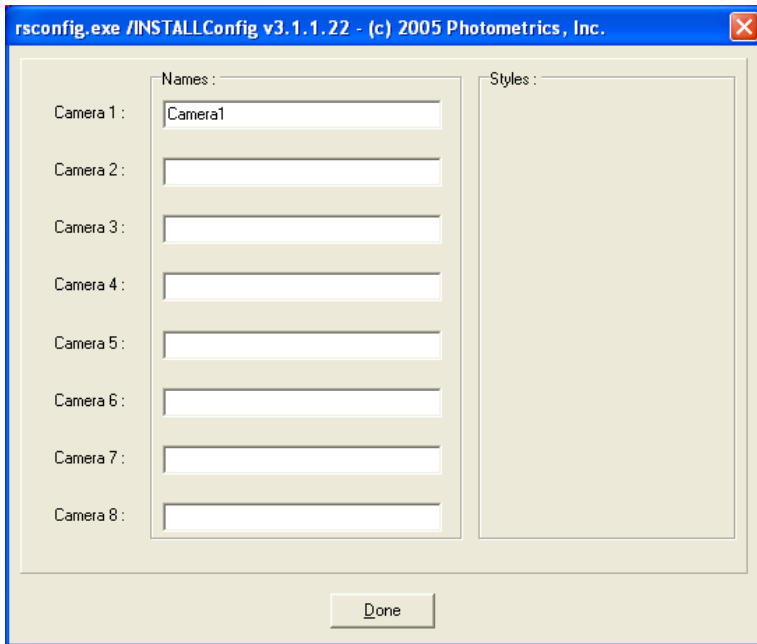
In the start-up screen click on **PVCam** to start the installation.

Follow the instructions of the setup program.

To check the installation start the **rsconfig.exe** program

After the installation start the program rsconfig.exe to check the

When the installation is finished, switch on the camera and start the **rsconfig.exe** program to check the installation. A camera name can be entered in the **Names** field.



Adopt the configuration settings by clicking **Done**.

Hamamatsu

Three Hamamatsu installations are available, depending on the hardware to be installed.

Hamamatsu Coreco

Coreco PC-DIG resp. Coreco Camlink interface.

Hamamatsu FireWire

Hamamatsu camera with FireWire interface.

Hamamatsu Phoenix

Phoenix Camlink interface.

During the installation of the Hamamatsu cameras one or more dialog windows **Hardware Installation** will be displayed. Click on **Continue Anyway** in each case.


A detailed installation description can be found on the DVD in PDF format in the folder *"Documentation\Hamamatsu"*.

BMC Fast Acquisition

BMC Fast Acquisition

Starts the installation of the BMC Trigger Interface. This interface is needed for the modules Fast Acquisition and Physiology.

Laser AOTF Driver



Laser AOTF Driver

Starts the installation of the Laser AOTF Driver. This driver is needed to control a Lasermodule.

Acrobat Reader Installation

Please follow the instructions of the Acrobat Reader setup program and click the **Next** resp. **Yes** buttons in the respective dialog windows to continue the installation.