



Installation Guide

AxioVision SE64 Rel. 4.9.1

March 2013
000000-2054-369

Carl Zeiss Microscopy GmbH

Carl-Zeiss-Promenade 10
07745 Jena, Germany

microscopy@zeiss.com
www.zeiss.com/microscopy



Carl Zeiss Microscopy GmbH
Königsallee 9-21
37081 Göttingen, Germany

© Carl Zeiss Microscopy GmbH, 1999

www.zeiss.de/axiovision

Microsoft, Windows, Windows Vista, Windows 7 are registered trademarks of Microsoft Corporation in the United States and/or other countries.

Table of Contents

Carl Zeiss AxioVision SE64.....	1
1 System Requirements.....	1
2 Important Notes.....	2
3 Backup Copies.....	2
4 Installation Procedure.....	3
4.1 Further Information Concerning the Installation.....	9
List of the available products.....	9
Carl Zeiss AxioCam Installation.....	10
Carl Zeiss AxioCam IC Installation.....	11
Acrobat Reader Installation.....	12

Carl Zeiss AxioVision SE64

1 System Requirements

The following minimal hardware features are required for AxioVision SE64 Release 4.9.1:

- Intel® XEON processor 5260 (3,33 GHz) or 5430 (2,66 GHz)
- Intel chipset i5400
- 6 GB RAM
- Graphics interface PCI xPress x16
- Graphics adapter 1280 x 1024 or 1680 x 1050 resolution, 32 bit true color, 64 MB RAM, DirectX 8.0 or higher
- Monitor 19" CRT or 19" TFT
- Hard disk drive 120 GB ATA 100, DVD-ROM drive
- 1 FireWire 400 (IEEE 1394a) interface
- 2 serial interfaces (COM1 and COM2)
- 2 USB interfaces
- Microsoft® Windows® 7 x64 Ultimate (Multilanguage), no special customer adapted versions

The user must be logged on with at least user privileges. For the software installation procedure local administrator rights are required.

Please note, that the hardware requirements of modules might be higher.

2 Important Notes

For installation under Microsoft Windows Vista Ultimate you need to log on with administrator privileges. If you do not have access to administrator rights on your computer, please contact your system administrator.

To work with the AxioVision SE64 software, you need at least to log on with "user" privileges.



Please ensure, that all PCI bus interface cards (for camera or framegrabber) are fitted into your computer before starting the installation. Ensure also that all cameras are connected.



After starting your system one or more **Found New Hardware Wizard** dialog windows appear on your screen. Please click **Cancel** to close the dialog window.



Please ensure, that **no** USB dongle is plugged in the computer during installation.

3 Backup Copies

We strongly recommend that all users save the data they create, such as images, measurement data, archives, reports, forms and documents, at regular intervals on an external medium. Otherwise it cannot be excluded that access to this data may be lost as a result of operational errors or hardware defects. Carl Zeiss accepts no liability for consequential damage resulting from insufficient data protection.

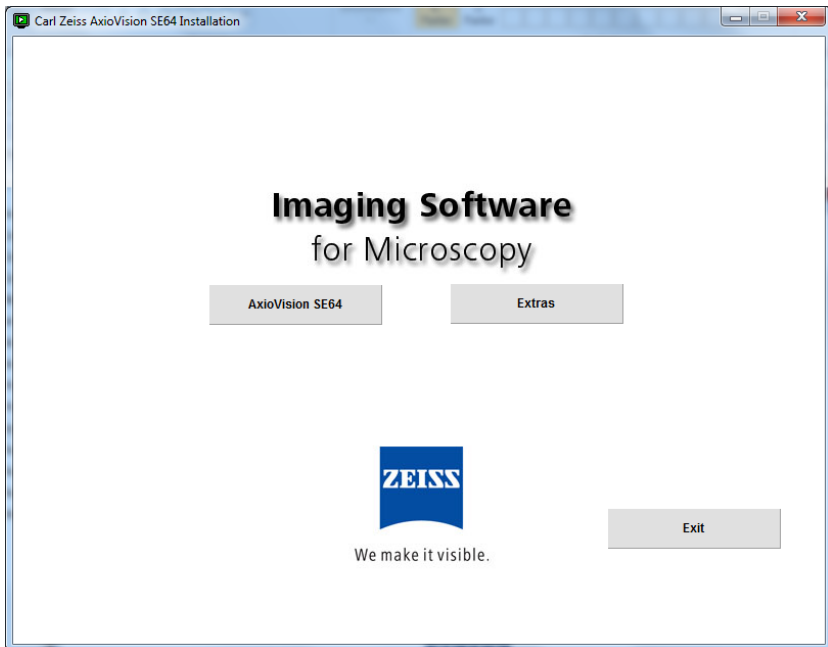
4 Installation Procedure

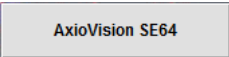
After you have inserted the DVD into the DVD drive the installation starts automatically. If the automatic start function (autorun) has been switched off on your system you must start the installation program manually as follows:

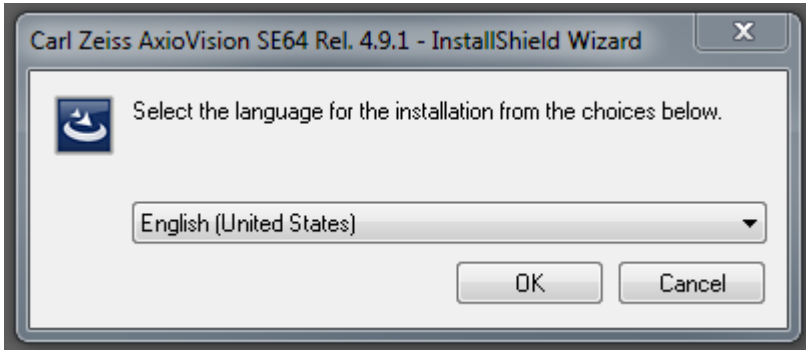
Double-click on the desktop icon **My Computer** 

Double-click on the **DVD-ROM Drive** icon 

After the start procedure (automatically resp. manually) this dialog window will be displayed on your system:

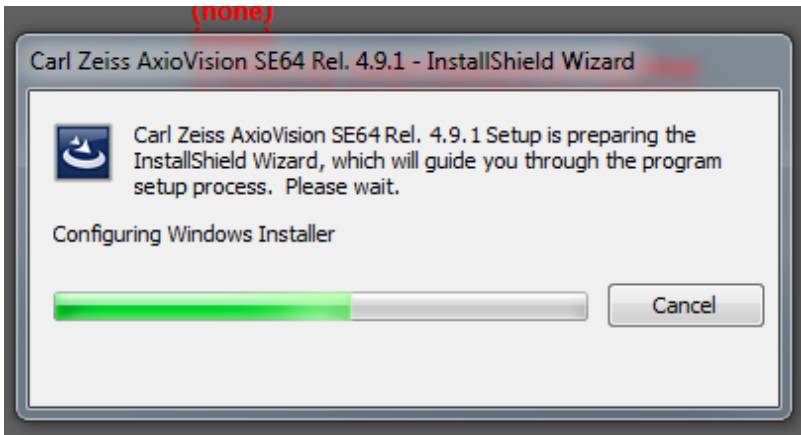


In the installation menu click on the  button. The following dialog window will be displayed:

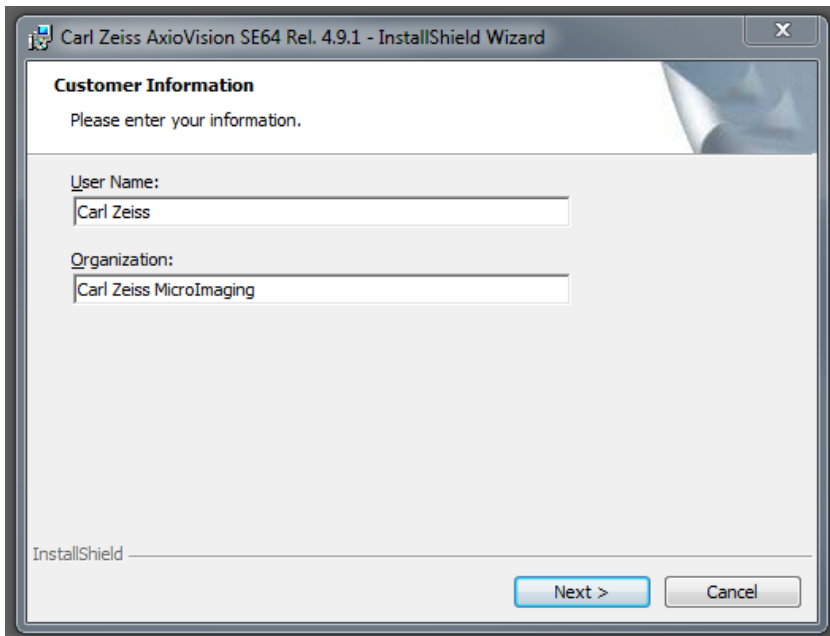


Select the language you want to install and click **OK**.

If you have not installed the actual version of Microsoft .NET Framework on your system, this installation will be started now:



In the dialog window **Customer Information** enter user name and organization.



Carl Zeiss AxioVision SE64 Rel. 4.9.1 - InstallShield Wizard

Customer Information
Please enter your information.

User Name:
Carl Zeiss

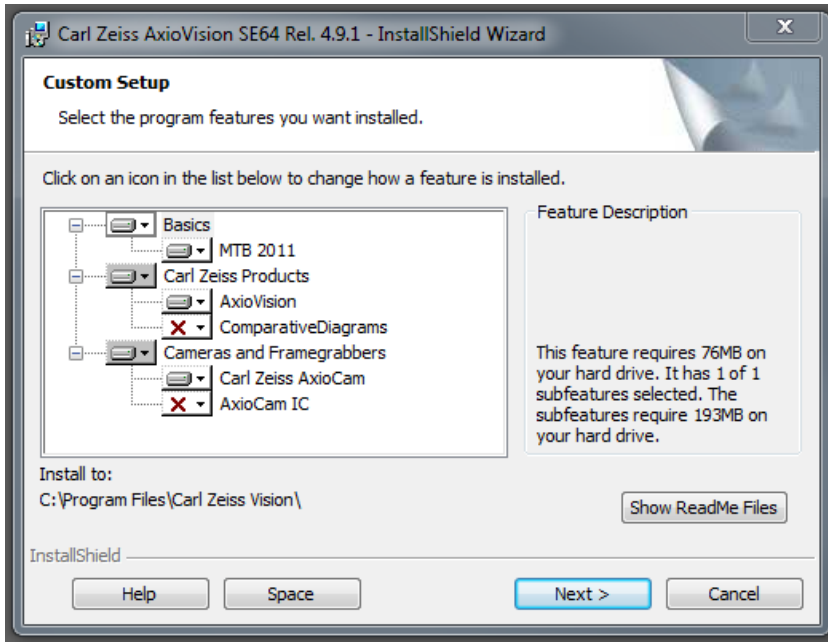
Organization:
Carl Zeiss MicroImaging


InstallShield

Next > Cancel

Click **Next**, when you have entered your customer information.

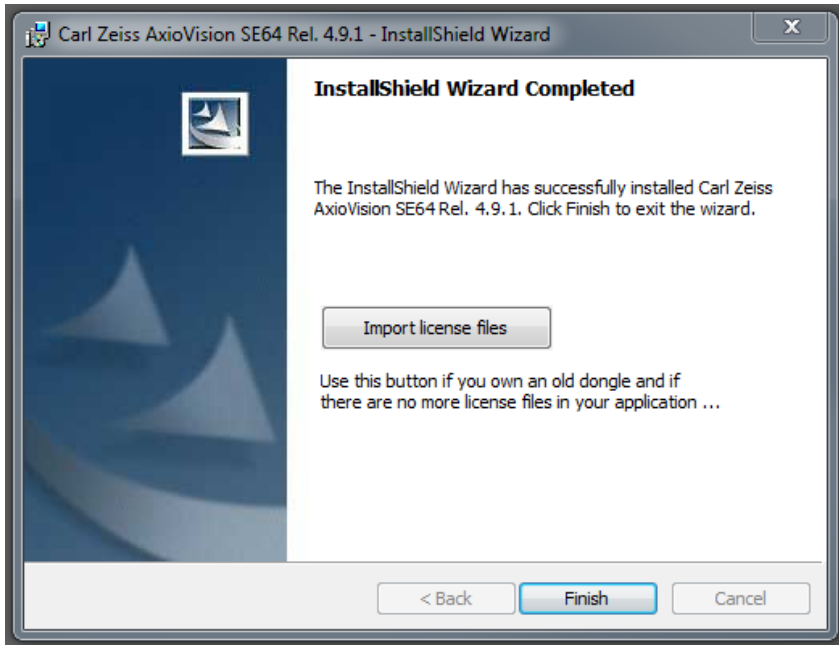
Follow the instructions of the setup program until the **Custom Setup** dialog window is displayed. In this dialog window, listing of available products is displayed depending on your license. Please select the products to be installed:



It is recommended that you carefully read the **ReadMe** files. Clicking on the **Show ReadMe Files** button will display the text window on your monitor, containing the files that provide complementary or late-breaking information concerning all product installations. The text window can be closed by selecting this window's  symbol. The installation procedure will continue.

Click **Next**. In the following dialog window click **Install** to start the installation. Please follow the further instructions of the setup program.


At the end of the installation the **InstallShield Wizard Completed** dialog window will be displayed.



Click **Finish** in this dialog window to complete the installation.

The installation is now finished. The system prompts for a restart, depending on the used operating system.

Notes:

- To work with the program, you need to log on at least as a member of the local "User" group.
- On your desktop double-click on one of the icons of the software you want to start, e.g.  for the AxioVision SE64 software.



- Double-click on this icon to open the **MTB2004 Configuration**. This configuration is only available for the microscopes Axio Imager, SteREO, Axiovert and Axio Observer.

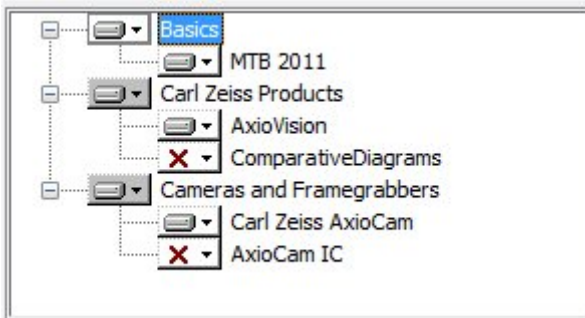


- Double-click on this icon to open the list of the available documentation.

4.1 Further Information Concerning the Installation

The following figure displays a list of all the available products.

List of the available products

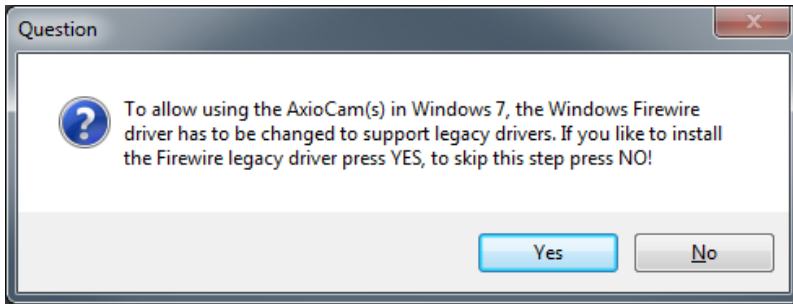


The volume of your list might be different, because only those products will be displayed, which are included in your license.

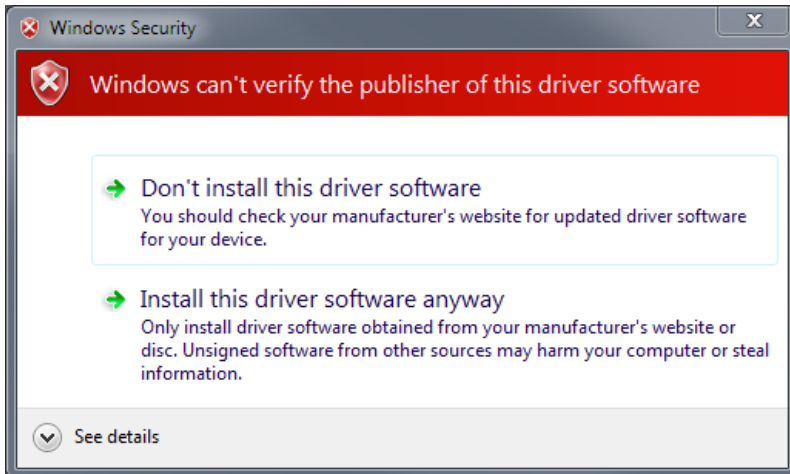
Note:

- During the installation of the AxioCam cameras and Acrobat® Reader® the following dialog windows are displayed. Due to technical reasons a user input is required to install these products.

Carl Zeiss AxioCam Installation



The current version of the Carl Zeiss AxioCam drivers requires the Window Firewire driver to be changed to support legacy drivers. Please answer the above question with yes.



During the installation of the Carl Zeiss AxioCam camera the dialog window **Hardware Installation** appears on your screen. (Corresponding dialog windows are displayed for the other Carl Zeiss AxioCam cameras.)

Click **Continue Anyway** to continue the installation.

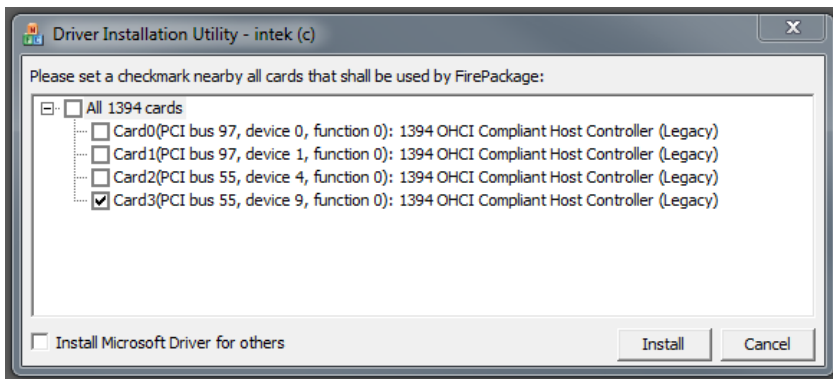
A detailed installation and user description can be found on the DVD in PDF format in the folder "*Documentation\Carl Zeiss AxioCam*".

Carl Zeiss AxioCam IC Installation

If you use the standard configuration, composed of "onboard" FireWire slot as well as of one FireWire PCI-Bus interface board, please follow the below-mentioned instructions.

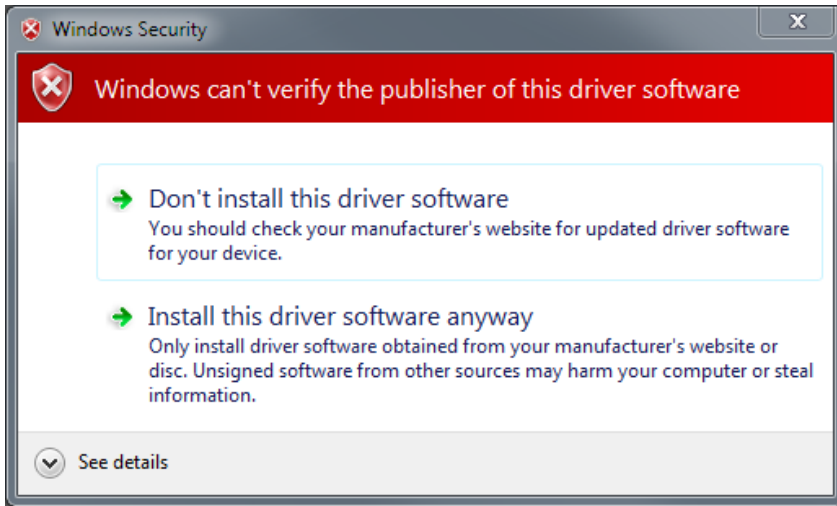
For further information please read our manual on the installation DVD under "*Documentation\AxioCam IC\AxioCam IC Installation+Reference.PDF*".

During installation the **Driver Installation Utility** dialog window will be displayed.



Execute the settings, as indicated in the screenshot above and click **Install**.

Now the dialog window **Windows Security** will be displayed.



➤ Click on **Continue Anyway**.

Acrobat Reader Installation

Please follow the instructions of the Acrobat Reader setup program and click the **Next** resp. **Yes** buttons in the respective dialog windows to continue the installation.

