

More than just a lens design or technology provider...
ZEISS is your complete solutions partner.



// ENABLEMENT SERVICES
MADE BY ZEISS

Imagine a complete and flexible solution designed for your business, evolving and growing as you do. ZEISS supports your business development and laboratory enablement with proprietary technology, product and business solutions.

Backed by the technology and resources of ZEISS, we take a comprehensive approach to evolving your business. We work to understand your goals, your needs and the values that set you apart. ZEISS Enablement assures the whole solution is aligned to your business goals.

Providing specialist customer care for enabled laboratories, ZEISS is available to you via a dedicated support service. Our customer care team is only a phone call, email, or 'click' away and is available to provide product information and technical support whenever you need it – 24 hours a day, 7 days a week.



We make it visible.

Engineering Consultancy

Prescription laboratory start-up, expansion or refurbishment requires considerable planning to ensure the optimal result is achieved. Expert guidance and project management from ZEISS can assist with project planning, facility layouts and equipment selection.



Equipment Servicing Contract

Keeping your equipment calibrated and serviced is vital to ensure a reliable operation and output. Scheduled maintenance of equipment, functionality checks, and component rebuilds can be provided by ZEISS Technicians across different equipment platforms in the areas of surfacing, hard coating and AR coating.



Process Support Contract

Providing peace of mind and confidence in your production, a process support contract provides complete access to the ZEISS Support Service Network for remote diagnosis and troubleshooting, as well as on-site troubleshooting as required.



Product Testing

The quality of lenses you produce has a direct impact on customer satisfaction. ZEISS offers comprehensive product testing to ensure your laboratory is replicating lens quality, designs and coatings flawlessly.



Problem Evaluation

Unresolved issues and defects within a manufacturing process can cause large financial penalties. ZEISS has the tools, capabilities and expertise to diagnose your technical issues and recommend actions to resolve them.



Laboratory Technical Audit

Efficient and stable laboratory processes are critical to a smooth and successful operation. ZEISS Technicians are available to conduct process audits for freeform, hard coating, AR coating and other processes in your laboratory. A report with recommendations for improvement is provided after the audit. An option to develop and project manage a technology road-map is also on offer.



Operator Training

It is vital to invest in developing knowledgeable operators to ensure that lens manufacturing and fitting activities are undertaken optimally, and to ensure that they understand the equipment they operate. ZEISS can provide you with the practical training for your operators, across all processes and equipment.



Operations Excellence

Continuous Improvement will drive overall lab performance through greater efficiencies, profitability and customer satisfaction. Operations Excellence is achieved through incremental improvement in all aspects of your business. ZEISS Experts conduct practical, on-site training modules giving your staff the knowledge and tools for sustainable improvement. We can work with you to build your own continuous improvement plan.



Quality Management Auditing

Implementing ISO International Standards can improve the efficiency and effectiveness of your operations, and ensure that your products and services consistently satisfy your customers' needs whilst complying with all applicable standards. ZEISS can work with your business to develop, implement and internally audit a tailored Quality Management System to assist you in achieving ISO 9001 Certification.



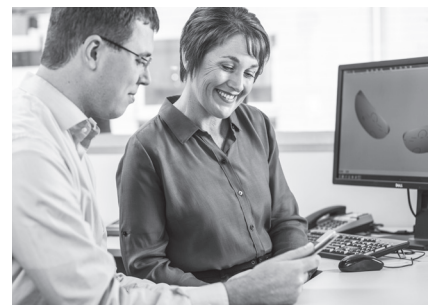
Consumables

As an essential element to all premium coatings, ZEISS offer an extensive range of consumables for surfacing, hard coating, anti-reflection coating, as well as equipment consumables and accessories. Manufactured to stringent ZEISS quality standards, all consumables available to you are also used within the ZEISS global laboratory network.



Lens Design & Analysis

Being empowered to develop and produce your own lens designs gives you the flexibility to uniquely meet the needs of your customers and to differentiate your business in the market. ZEISS can provide the training and interactive tools to assist you in designing your own range of freeform lenses.



Click Services: Lens Pre-Calculation

Pre-Calculation to evaluate different geometries before manufacturing ensures the best cosmetic outcome and successful glazing. ZEISS can provide a 3D representation of the prescription lens design output for review before production.



Optical Standards

Standard compliance is an important quality goal, and improves the likelihood of customer and consumer product acceptance. ZEISS can assist your business in understanding various optical standards, tailoring education packages to suit the needs of your business. Training can be delivered via various platforms such as webcast, interactive webinar or onsite training.



Marketing

Various tools and programs are available to help create demand, and facilitate communication to all your target audiences. Offering customised marketing initiatives and unique business building opportunities, ZEISS aims to achieve sustainable growth for your business.



Finance

We understand that making the move to freeform and/or AR coating production can be a substantial investment. ZEISS can provide a range of finance options to support your business development.



Human Resources and Legal

Managing staff is a key part of running a successful business. ZEISS can provide advice on how to implement legislation and best practice into your business across a range of topics, including: recruiting, performance management, discrimination, termination, record-keeping, leave requirements, and employment contracts.



Carl Zeiss

enablement@zeiss.com
www.zeiss.com/enablement