

# **HANDLE THE NIGHT. ZEISS DTI 3/35**



Seeing beyond



## **Firmware Update – ZEISS DTI 3/35**

Version 0143XX1313XXXX

Table of Contents

---

<b>Release Note</b>	<b>3</b>
<b>Installing the Update</b>	<b>4</b>
<b>Contrast Boost</b>	<b>6</b>
<b>LED-Off</b>	<b>7</b>
<b>Auto-Off</b>	<b>7</b>
<b>Battery Run Time</b>	<b>7</b>
<b>Focus Frame</b>	<b>8</b>

## **Release Note**

We would like to thank our loyal community, trade partners and the media for the extensive feedback we have received since the release of the ZEISS DTI 3/35. We strive to fulfill their wishes in the best possible way in the future. With this firmware update, we are adding important features to the DTI 3/35 that will make the hunting experience even more successful and comfortable.

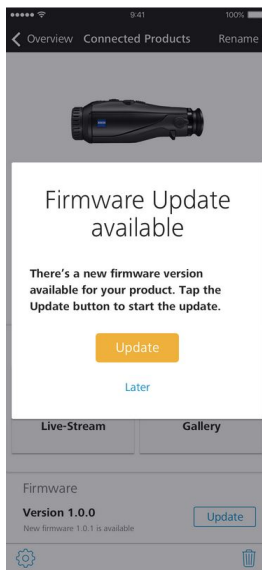
With this firmware update we added some features and improvements to the DTI, including:

- Contrast boost mode
- LED-Off function
- Auto-OFF setting
- Increased battery run time
- Optimized orientation in Picture-in-Picture mode

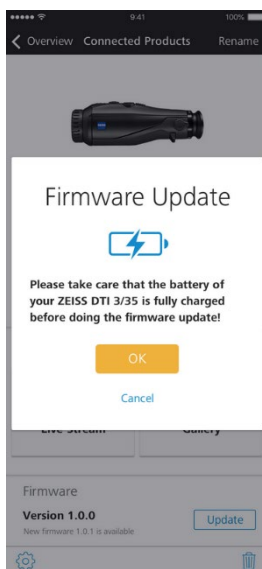
## Installing the Update

- Note that the firmware update can only be carried out using the ZEISS Hunting App.
- Make sure that you have installed the latest version of the ZEISS Hunting App.
- Make sure that you activated mobile data before starting the ZEISS Hunting App
- Do not switch off or operate the DTI 3/35 during the update process!

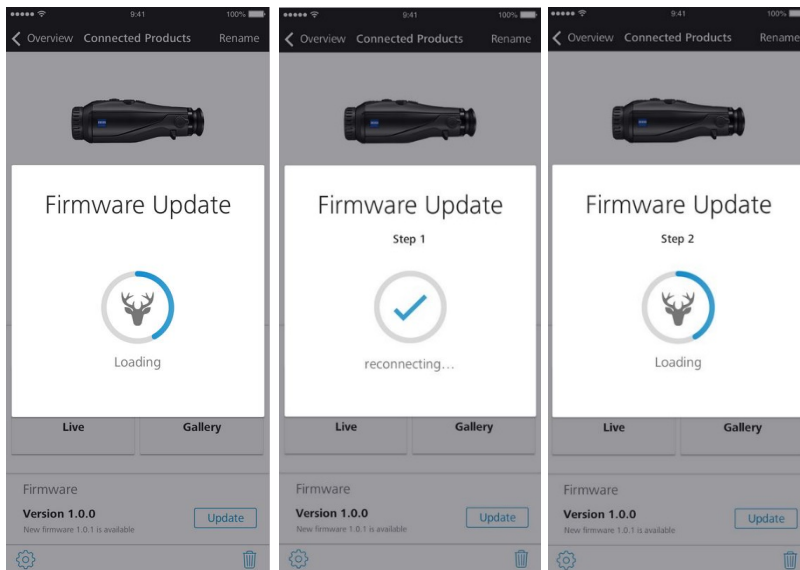
1. When starting the ZEISS Hunting App on your smartphone, you will receive a push notification. Click on "Update" as shown in the picture below.



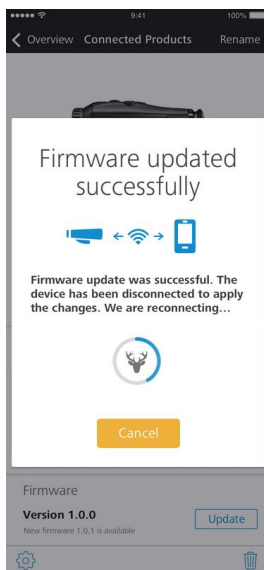
2. Please make sure that before you start the update, the DTI has to be fully charged and connected to your smartphone via WLAN.



3. The update runs automatically in two steps. It will only take a few minutes.



4. After the update has finished, the DTI will disconnect and reconnect to the smartphone to apply the changes. After that, you can use the DTI as usual.



**Attention:** During the update please do not switch off or use the DTI.

- 4.1 In some cases the update will not run through automatically. If the DTI does not reconnect automatically follow these steps:
  - 4.1.1 After step 1 of the update the DTI will restart and wireless will be switched off
  - 4.1.2 After the DTI has rebooted up activate the wireless on your DTI again
  - 4.1.3 Make sure that your smartphone is again connected to the DTI wireless network
  - 4.1.4 Return to the ZEISS Hunting App. The update process should resume automatically with step 2
  - 4.1.5 If the update process does not restart automatically, press the update button in the app again, the update should resume with step 2

5. **Done! You can immediately begin enjoying the new features of your ZEISS DTI 3 thermal imaging camera!**

## Features

### Contrast Boost

Fog and high humidity deteriorate the contrast of thermal imaging devices significantly. The contrast boost highlights the edges of structures, plants and animals to regain some of the contrast that is lost due to the unfavorable weather conditions. This allows you to see more details.

**Contrast Boost OFF**

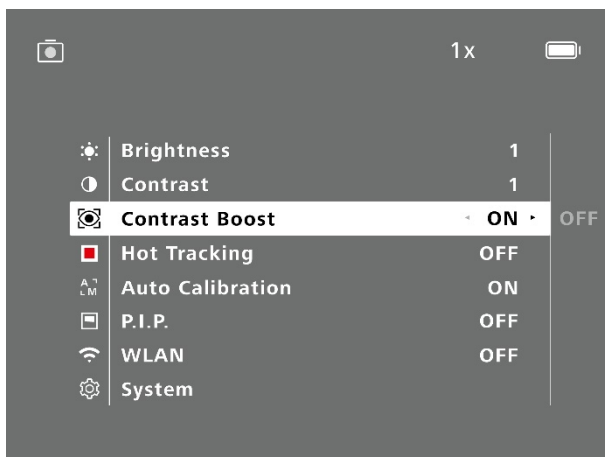


**Contrast Boost ON**



#### Activating the Contrast Boost function:

1. Long press the menu button on the DTI to call up the main menu.
2. Navigate to the "Contrast Boost" submenu using the arrow keys.



3. Confirm the submenu by pressing the menu button.
4. Select "ON" to activate the Contrast Boost using the left arrow key.
5. Confirm the selection by pressing the menu button.
6. Long press the menu button to exit the main menu.
7. [Tutorial Video](#)

## LED-OFF

You now have the ability to switch off the LED light on top of the DTI completely in case that it is too bright when hunting or it distracts you from your observations.

### Activating the LED-OFF function:

1. Stay in the normal observation mode (do not open the main menu).
2. Press the right arrow key for 2 seconds until the notification "LED-OFF" appears.
3. The LED is now turned off.
4. If you wish to turn the LED on again, repeat the steps 1-3.



## Auto-OFF

Also, the DTI will switch off automatically after 60 minutes of inactivity in order to prevent the battery from running empty if the hunter forgot to switch off the DTI.

## Battery Run Time

The DTI now has 10h of battery run time. This will allow you to be even more independent of external power sources. With the 10h of run time the DTI has enough battery capacity to last for 2-4 hunting sessions.

## Focus Frame in Picture-in-Picture Mode

The focus frame provides you with an indication which area of the main image you see in the PIP (Picture in Picture). This allows you to find the details you are looking for much faster.



### Activating the P.I.P function:

1. Long press the menu button on the DTI to call up the main menu.
2. Navigate to the "Picture-in-Picture" (P.I.P) submenu using the arrow keys.



3. Confirm the submenu by pressing the menu button.
4. Select "ON" to activate the Focus Frame using the left arrow key.
5. Confirm the selection by pressing the menu button.
6. Long press the menu button to exit the main menu.
7. [Tutorial Video](#)



Become part of the **ZEISS Community**.

Follow us on Social Media.



Seeing beyond



[www.facebook.com/ZEISSHunting](http://www.facebook.com/ZEISSHunting)



[www.youtube.com/user/zeissportsoptics](http://www.youtube.com/user/zeissportsoptics)



#ZEISSHunting



zeisshunting

**Carl Zeiss AG**

Business Unit Consumer Products

Carl-Zeiss-Straße 22

73447 Oberkochen

Germany

[www.zeiss.com/thermal-imaging](http://www.zeiss.com/thermal-imaging)