

A higher level of diabetes care.

Automated, integrated, convenient
teleretinal solution.

ZEISS VELARA



Seeing beyond

Reducing the risk of severe vision loss.

Screen early, manage better and complete quality measures.

Are your diabetic patients receiving their annual eye exams? Is patient non-compliance affecting your HEDIS scores and reimbursement rates? What if there was an easier solution? What if you could offer a higher level of diabetes care and improve patient compliance at the same time?

Today, you can.



Diabetic retinopathy is the leading cause of blindness among U.S. adults.

Challenge



Over **30 million** Americans have been diagnosed with diabetes¹



1 in 3 Americans with diabetes will suffer from diabetic retinopathy at some point²



Only about **50% of people** with diabetes had a dilated eye examination in the previous year³



Only about **60% of people** with diabetes have the recommended yearly screenings for diabetic retinopathy⁴

Solution



The risk for severe vision loss due to diabetic eye disease can be **reduced by 95%** with early detection, timely treatment of retinopathy and appropriate follow-up care⁵

1. <https://www.cdc.gov/diabetes/pdfs/data/statistics/national-diabetes-statistics-report.pdf>

2. <https://www.niddk.nih.gov/health-information/diabetes/overview/preventing-problems/diabetic-eye-disease>

3. <https://www.cdc.gov/mmwr/preview/mmwrhtml/00019889.htm>

4. <https://www.aao.org/preferred-practice-pattern/diabetic-retinopathy-ppp>

5. National Institute of Diabetes and Digestive and Kidney Diseases

Introducing the ZEISS VELARA Teleretinal Screening System.



Scan, grade, report.

With ZEISS VELARA™, you can provide complete, connected care right in your office. You'll get quick, convenient, timely results that easily fit into the primary care visit for both your patient and staff and high-quality imaging that gives graders confidence in the assessment.

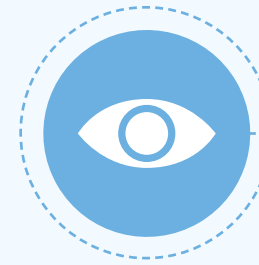
While this retinal screening does not replace a comprehensive eye exam with your patient's eye care provider, it can be an important first step.

ZEISS VELARA includes:

- **An automated camera and enhancement algorithm** make it easy for your staff to capture high-quality images of the patient's retina.
- **A secure, HIPPA-compliant, cloud-based platform** and central management system that streamline image upload and analysis.
- **Seamless integration** with leading electronic medical record (EMR) systems.
- **Grading software** that enables immediate review of the uploaded images by your ophthalmology department or a member of our nationwide network of board-certified eye care providers.
- **Built-in connectivity with ZEISS FORUM®**—ophthalmology practice software for eye care data and disease management—that enables even more efficient patient care.

Access at the point of care, efficient workflow and better, managed care over time.

One clinic visit, with results in as little as one business day



Capture [Clinic] Quickly and easily capture retinal images as part of the routine patient exam



Upload [Cloud] Automatically upload retinal images to the secure cloud-based platform for review



Enhance [Cloud] Proprietary enhancement algorithm ensures consistent, high-quality images



Diagnose [Cloud] Board-certified eye care providers grade and provides a DRE report remotely



Consult and Refer [EMR/Clinic] DRE report added to patient's EMR, and treatment referred, as needed



Follow-up [ECP] Streamline documentation and long-term patient care via FORUM connectivity

More connected, complete care with ZEISS VELARA



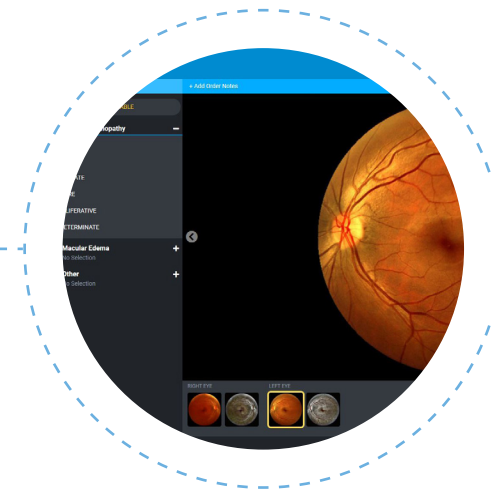
Close the gap in diabetic care

The VELARA Teleretinal Screening System is an easy-to-use, yet sophisticated eye imaging tool developed for primary care providers, health systems, payers and multi-specialty group practices. It offers an end-to-end solution designed to help close the care gap for patients diagnosed with diabetes, improve primary care quality measures, optimize practice workflow, and enhance the patient experience.



Improve quality measures

HEDIS is one of the health care industry's most widely used performance improvement tools. If you perform the DRE at the point of care, you can immediately fulfill the HEDIS Complete Diabetic Care (CDC) quality measure and receive a Risk Adjustment Factor (RAF) eligible diagnosis, all improving your quality metrics and reimbursement.



Optimize workflow

The VELARA Teleretinal Screening System from ZEISS helps you build a better workflow. Easily incorporated into your current care environment, ZEISS VELARA offers bi-directional EMR integration, automated image capture, effortless billing and timely results.

The automated camera and intuitive enhancement algorithm allow your medical assistants to capture the images within seconds.

The cloud-based platform and grading software enable board-certified eye care providers from our national reading network or your ophthalmology department to grade the images and transmit the final diagnostic report back to the EMR system. Your billing department submits for reimbursement and you and your patients get a fast turnaround on the results. This optimized workflow saves time, minimizes errors and helps create more synergy with your eye care partners.



Enhance patient experience

Patients need to be referred as early as possible to prevent vision loss. With the ZEISS VELARA Teleretinal Screening System, you can better manage your patients over time, help them comply with their annual screenings and improve the continuum of care by seamlessly transmitting data to the patient's ophthalmologist with the system's built-in connectivity to ZEISS FORUM.

A comprehensive approach to routine retinal screening.

Cost-effective, worry-free service and support—a subscription model

With the VELARA Teleretinal Screening System from ZEISS, there is no hardware or software to purchase or any complicated support agreements. The VELARA Solution is a subscription-based model that includes hardware, software, EMR integration, service, support and any required training.

Tailor your subscription model to your needs. Pay yearly, quarterly, or monthly, or even pre-pay depending on your budget.

Our unique subscription model means you don't have to worry about maintenance, ongoing training, or having to purchase software and hardware upgrades.

ZEISS VELARA brings it all together

For more than 175 years ZEISS has been committed to advancing patient care with innovative solutions. The ZEISS VELARA Teleretinal Screening System offers a comprehensive approach to help you close the care gap for patients at risk for eye disease. Now, for the first time, your clinic can offer diabetic retinal scans as part of your primary care routine.



Carl Zeiss Meditec, Inc.
5300 Central Parkway
Dublin, CA 94568
USA
www.zeiss.com/us/med

en-US_31_011_00101 Printed in the United States. CZ-VI/2021 United States edition: Only for sale in selected countries.
The contents of the brochure may differ from the current status of approval of the product or service offering in your country.
Please contact our regional representative for more information. Subject to change in design and scope of delivery and due to
ongoing technical development. VELARA and FORUM are either trademarks or registered trademarks of Carl Zeiss Meditec AG or
other companies of the ZEISS Group in Germany and/or other countries.
© Carl Zeiss Meditec, Inc., 2021. All rights reserved.