

# Time savings with the ZEISS Cataract & Premium Cataract Workflow



Seeing beyond

Large study with 430 workflows\* in a hospital chain

## Source



### Title

Time Savings Using a Digital Workflow versus a Conventional for Intraocular Lens Implantation in a Corporate Chain Hospital Setting.



### Authors

Felix Rombold, Christoph Niederdelmann, Riccardo Pariti & Bader Khayat



### Publication

[Clinical Ophthalmology \(2024\): 113-119. DOI:10.2147/OPHTH.S439930](#)

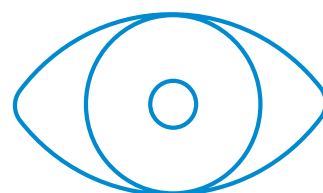
## Methodology & Setup

### Setting



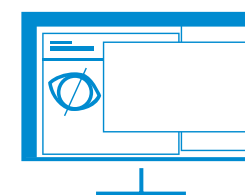
**Multi-site** in a large Corporate Hospital Chain in Germany

### Sample Size



Prospective study with **430 cataract workflows\***

### Added digital ZEISS solutions



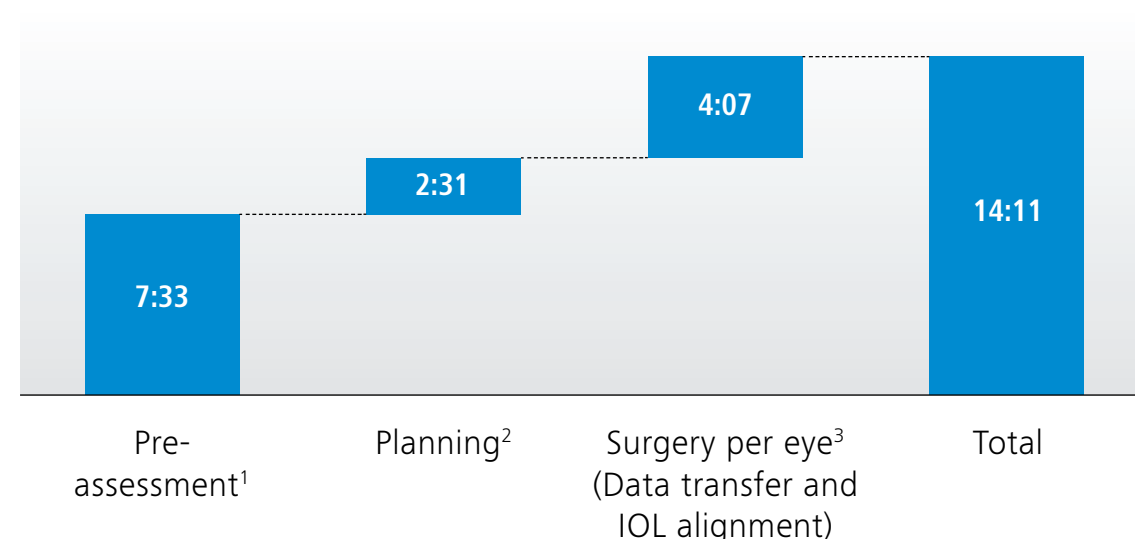
- ZEISS FORUM
- ZEISS EQ Workplace
- ZEISS CALLISTO eye

### Main evaluation criteria

- **Comparison** of mean process times and variability for a digital workflow versus existing conventional workflow
- **Time measurements of process steps along the cataract workflow:** Preoperative assessments, planning (calculation of IOL power, data transfer/export for surgery to OR), surgery (data import on operating devices in OR and IOL axis marking and alignment)

## Results

### Time savings per workflow per process step (min:sec)



### Time savings per workflow

**14:11 min** for toric IOLs  
**10:04 min** for multifocal & EDoF IOLs  
**7:33 min** for monofocal IOLs<sup>4</sup>

**For further details see publication**

<sup>1</sup> For all IOL types, <sup>2</sup> Planning – EQ Workplace implemented for toric or multifocal IOLs only, <sup>3</sup> Surgery – for toric IOLs only, <sup>4</sup> Monofocal aspheric IOLs

\*Workflow includes: Pre-op measurements and planning for both eyes, surgery for one eye per patient only

Details presented at ESCRS Sep 10th, 2023 by F. Rombold, "Impact Of Digital Cataract Workflow On Productivity"