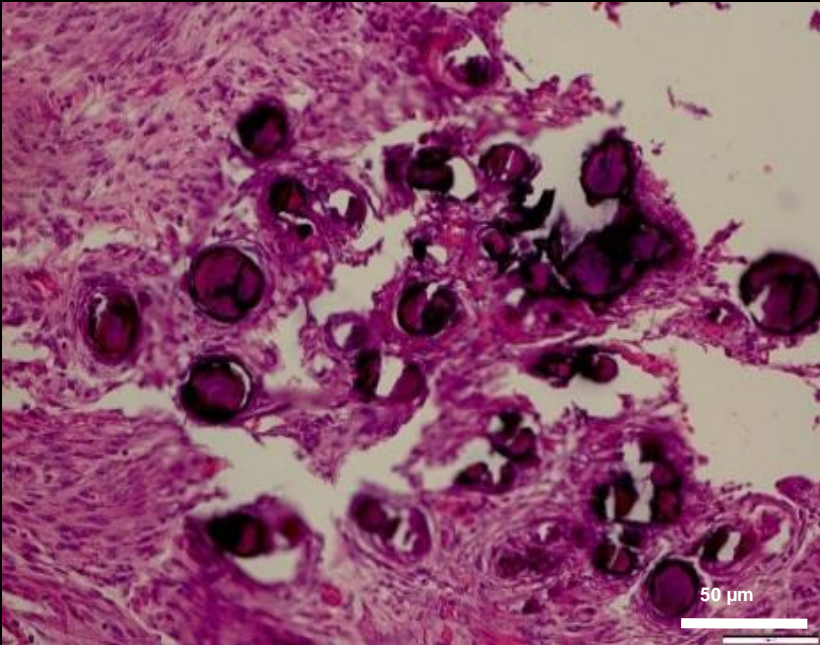


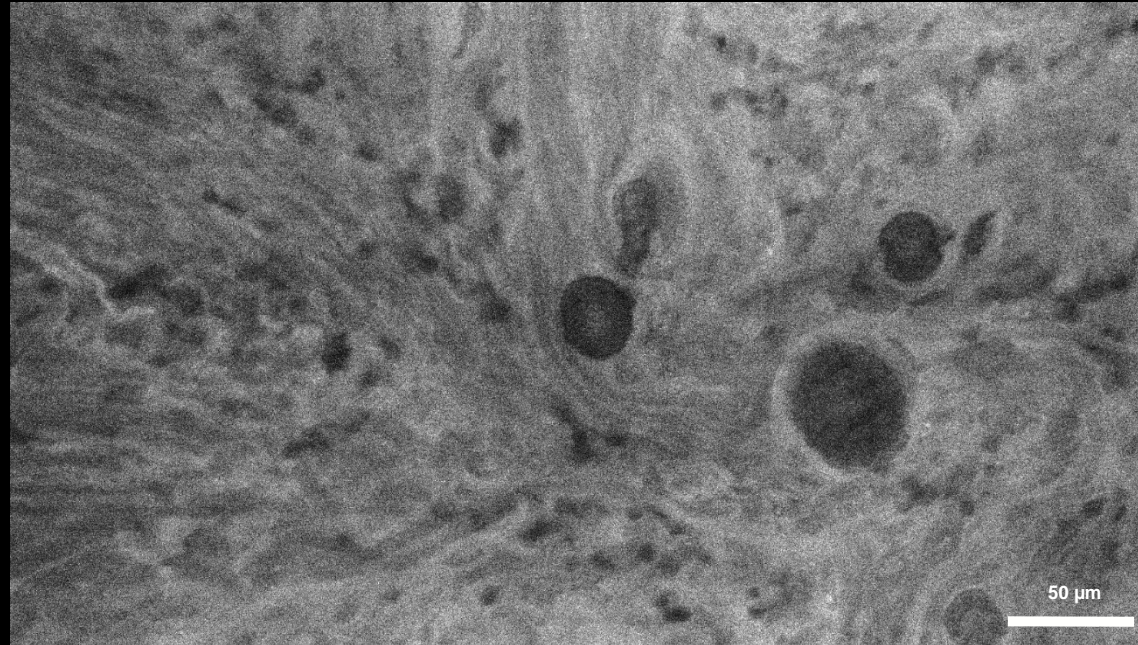
Correlation of intraoperative confocal imaging with traditional histological findings*

Meningioma Psammoma bodies

H&E-Stained



Ex Vivo Confocal Image



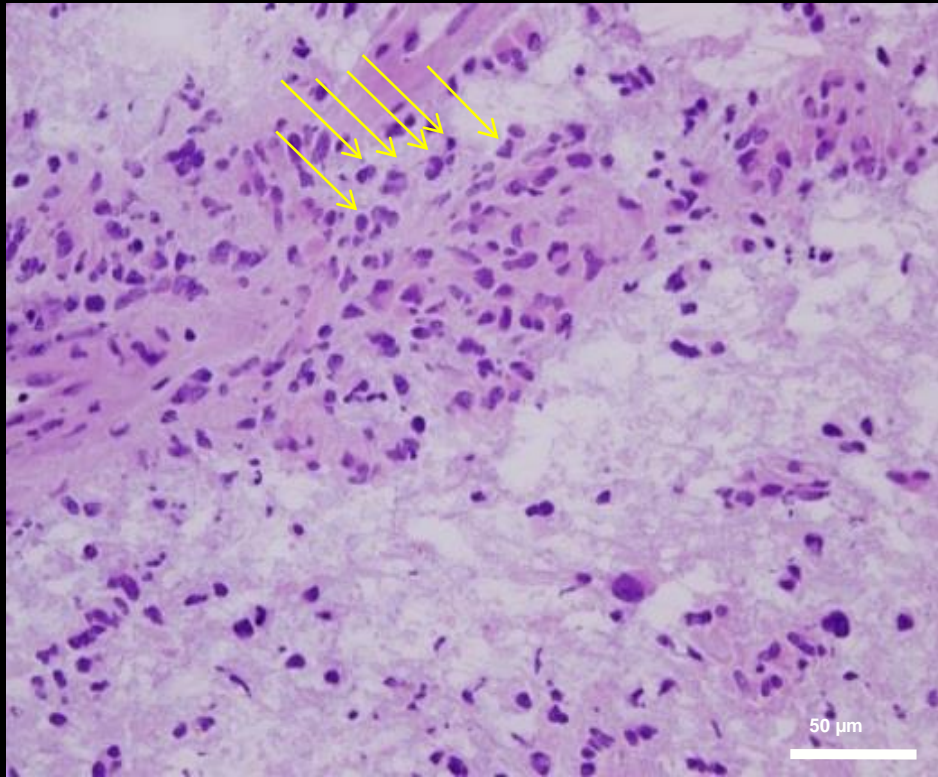
*Eschbacher et al., J Neurosurg 2012

Images courtesy BNI, Phoenix

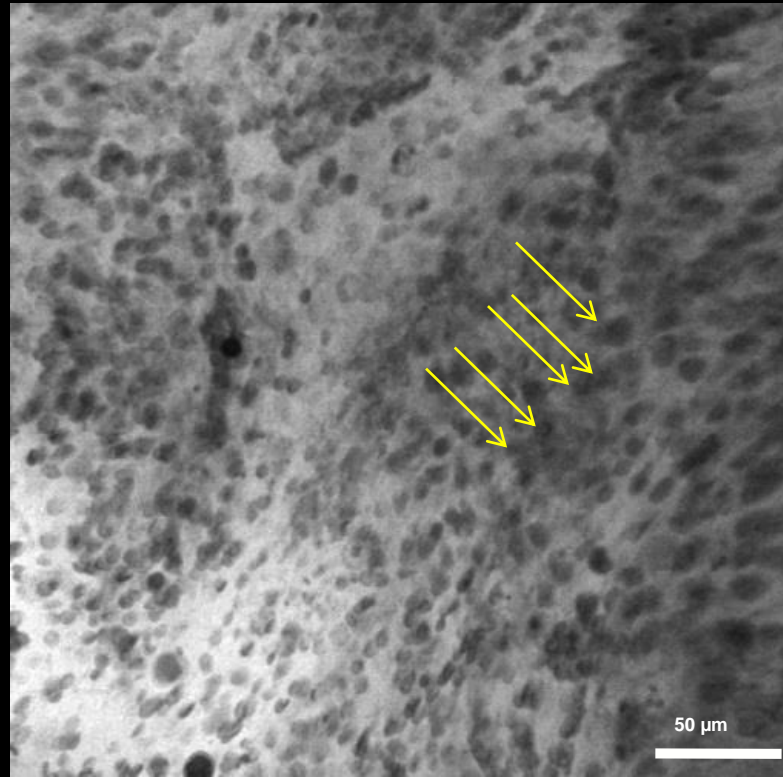
Correlation of intraoperative confocal imaging with traditional histological findings*

Glioblastoma recurrent, high cellularity, pleomorphism, nuclear atypia

H&E-Stained



In Vivo Confocal Image



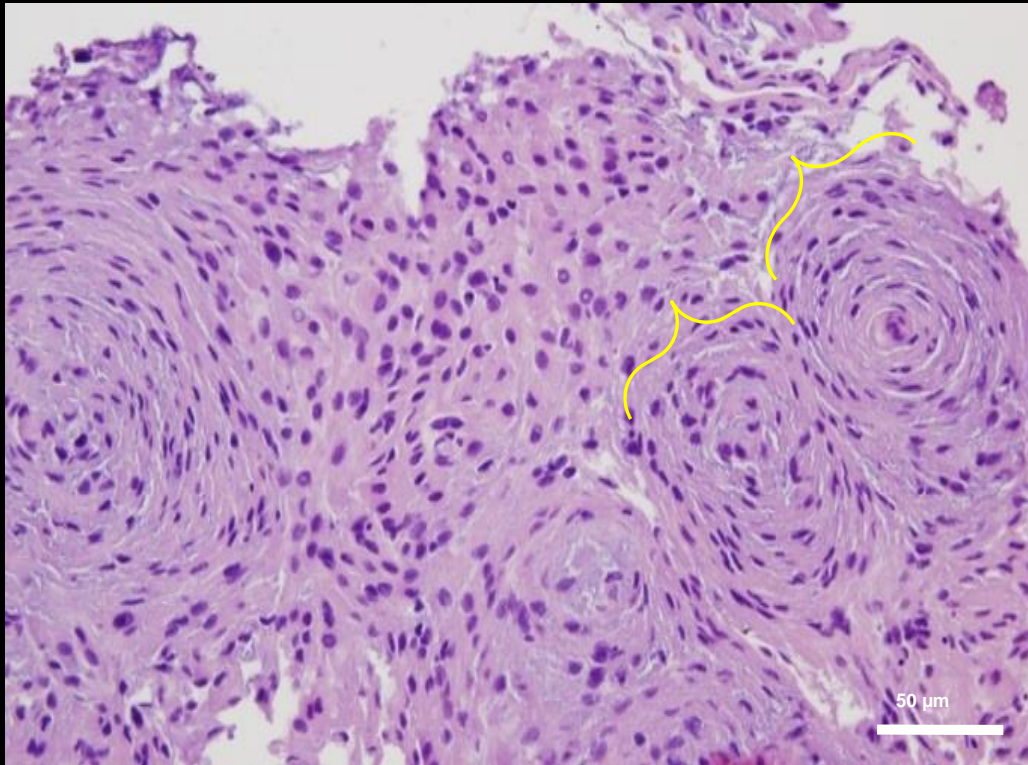
*Eschbacher et al., J Neurosurg 2012

Images courtesy BNI, Phoenix

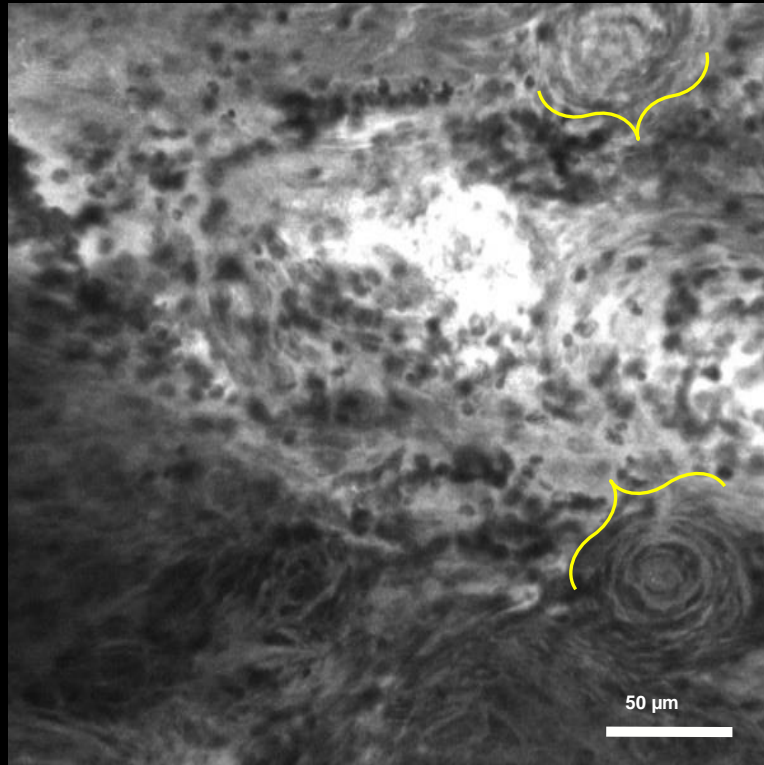
Correlation of intraoperative confocal imaging with traditional histological findings*

Meningioma transitional (grade I) cellular tumor

H&E-Stained



In Vivo Confocal Image



*Eschbacher et al., J Neurosurg 2012

Images courtesy BNI, Phoenix

Putting in vivo cellular imaging at your fingertips.

ZEISS CONVIVO





Seeing beyond