



Resourceful Response to Pandemic Care Concerns

Images and diagnoses courtesy of Sandor Ferenczy, CRA, OCT-C, Wills Eye Hospital, Ocular Oncology Service

Background

71-year-old pseudophakic caucasian male with hypertension presents for a routine follow up via telehealth examination during the COVID pandemic. History is positive for a juxtapapillary choroidal melanoma treated four years prior with plaque radiation and PRP and a subsequent rhegmatogenous retinal detachment with silicone and buckle repair. Multi-modal imaging with fundus photography and OCTA confirms posterior pole stability despite the presence of tumor and radiation retinopathy.

Innovative Strategy for Risk Mitigation

In response to patients' hesitancy due to the exposure risk of a large city hospital, several satellite offices were established. The implementation of the CLARUS® 700 and CIRRUS® 6000 from ZEISS in each office facilitates safe in-person diagnostic imaging through socially distanced image capture capability

and the use of protective coverings. The physician reviews the True Color CLARUS images and CIRRUS scan during a telehealth visit, maintaining high quality of care in a comfortable environment for the patient.

Enhancing Telemedicine with Technology

During an era of time-consuming clinic visit protocols, opening imaging facilities allows timely monitoring of oncology patients at their regularly scheduled follow up interval. Multimodal imaging enables diagnostic confidence in the absence of an in-person examination. In this case, the CLARUS 700 photo not only confirms the tumor stability but is used in conjunction with the CIRRUS 6000 image of the superficial retinal plexus to verify a healthy posterior pole despite the extensive ocular history and virtual office visit.

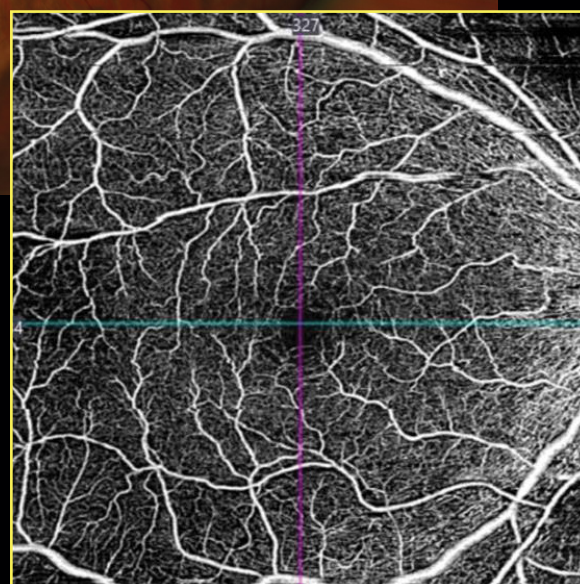
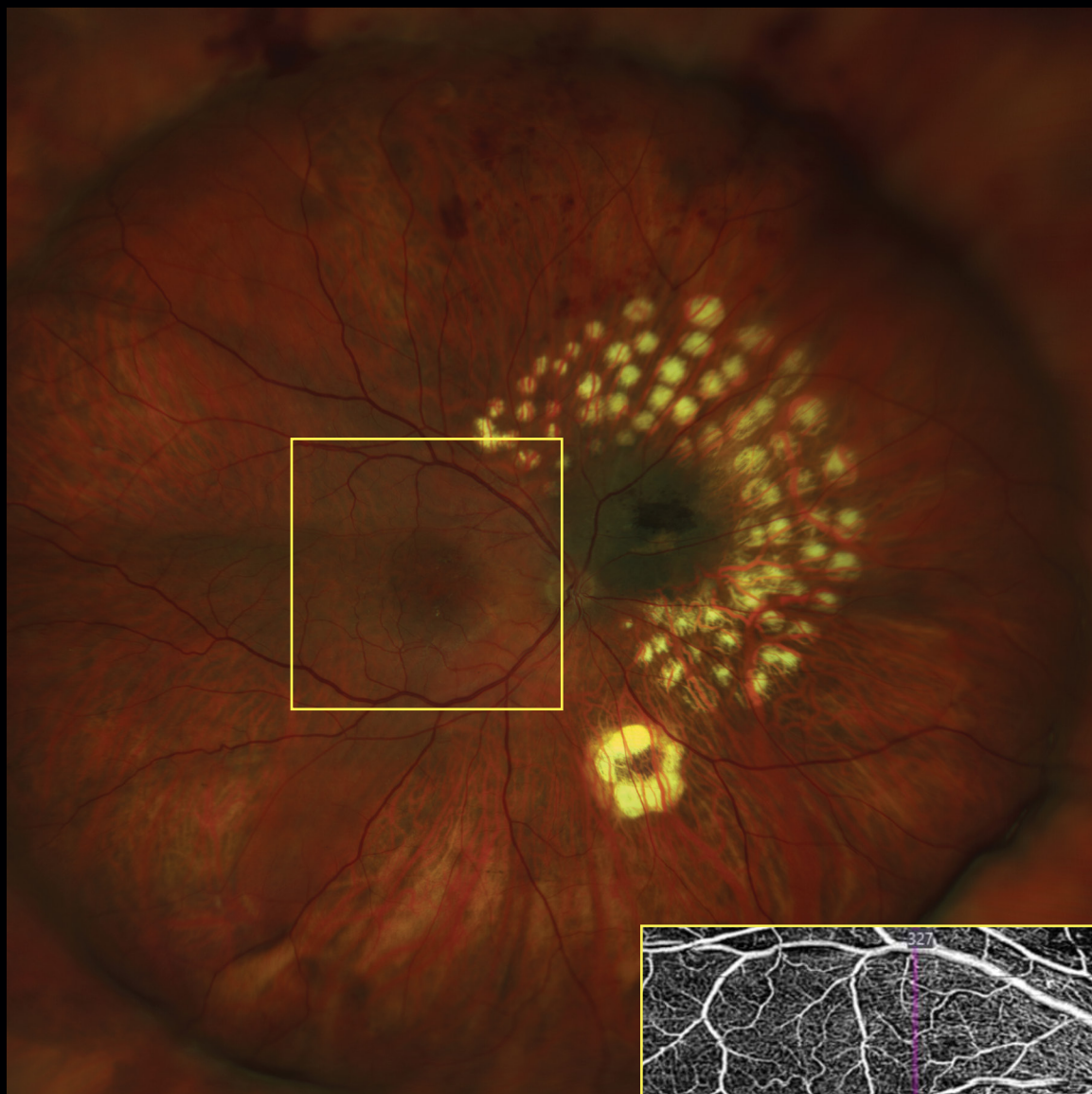


Do you have an interesting case to share?

Submit your best-shot images captured with the ZEISS CLARUS HD Ultra-widefield Fundus Imaging System today. Visit www.zeiss.com/imagingspotlight.

The diagnoses provided by the healthcare professionals reflect only their personal opinions and experiences and do not necessarily reflect the opinions of any institution with whom they are affiliated. The healthcare professionals credited in this case study have a contractual relationship with Carl Zeiss Meditec, Inc., and have received financial compensation.

True Color widefield: Color Montage



OCTA-Superficial Retinal Plexus