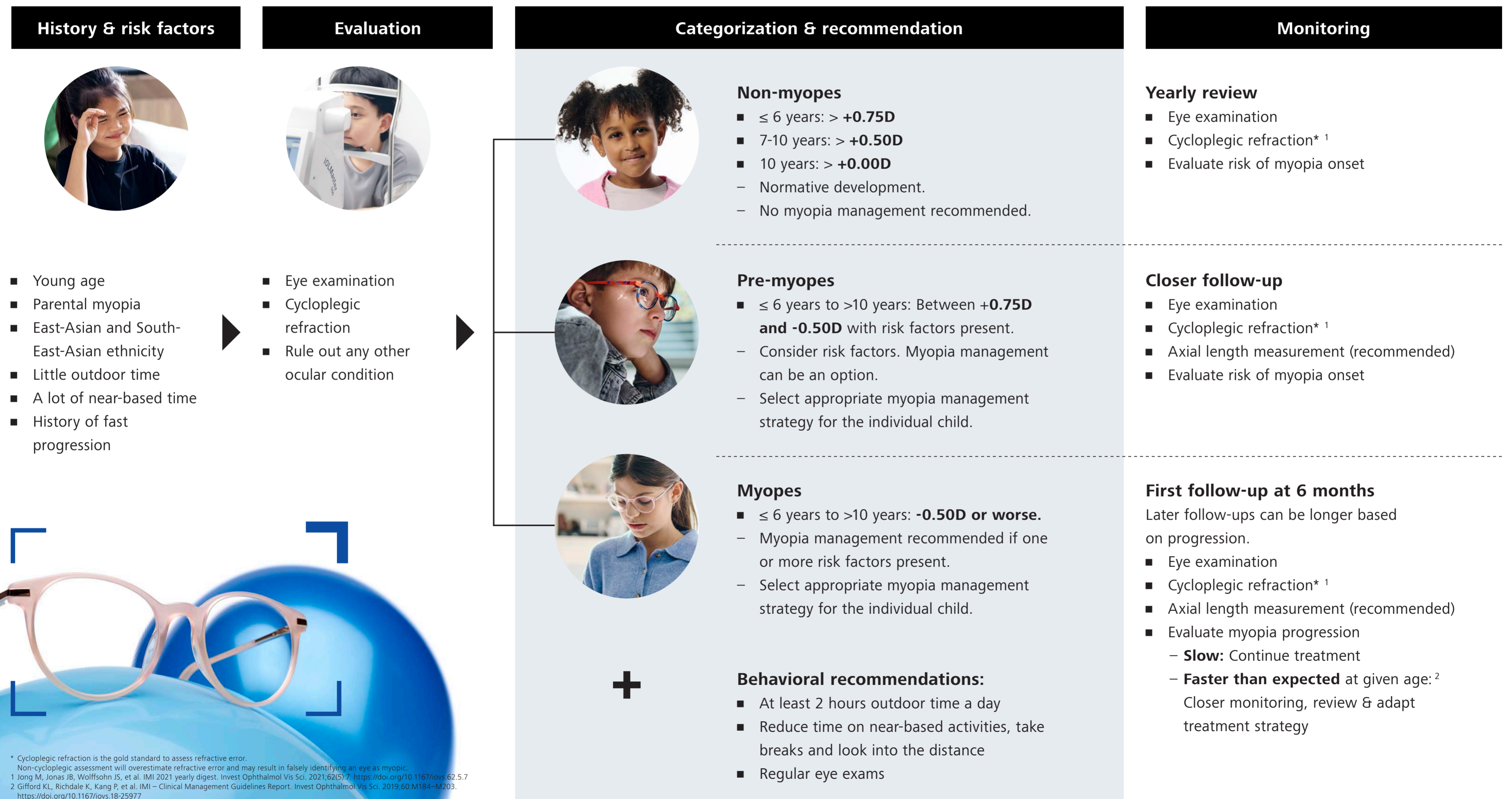


Myopia management guideline

Risk factors and preventative measures



Seeing beyond



* Cycloplegic refraction is the gold standard to assess refractive error. Non-cycloplegic assessment will overestimate refractive error and may result in falsely identifying an eye as myopic.
¹ Jong M, Jonas JB, Wolfssohn JS, et al. IMI 2021 yearly digest. Invest Ophthalmol Vis Sci. 2021;62(5):7. <https://doi.org/10.1167/iov5.62.5.7>
² Gifford KL, Richdale K, Kang P, et al. IMI – Clinical Management Guidelines Report. Invest Ophthalmol Vis Sci. 2019;60:M184–M203. <https://doi.org/10.1167/iov5.18-25977>