

Running a cycle

Loading frames

Open frames. Place frames on the interior rails with lenses facing up and temples pointing down. (Figure 7) Allow approximately ¼" between frames to allow light from UVC bulbs to illuminate onto all parts of the frames. Continue loading frames to ½" of the rail ends.

Close lid and press the Start button on top of the lid to begin a disinfection cycle. LED lights will illuminate pulsing blue and the lid will automatically lock while the cycle is running. Lights will change to solid green and lid will unlock once cycle is complete. The frames are now disinfected.

NOTE: Any other LED colors, besides blue or green, indicate a status change with the device. Please consult the ZEISS UVClean User Manual at www.zeiss.com/UVClean for further details.

NOTE: The ZEISS UVClean is not intended for self-service use by consumers and should only be operated by eye care professionals.

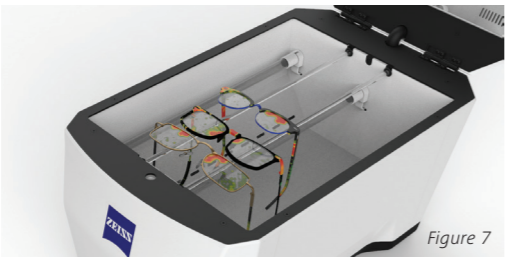


Figure 7



For full instructions on how to get the most out of your UVClean, please visit our support page at: www.zeiss.com/UVClean

Carl Zeiss Vision Inc.

Customer Service USA: 1-800-201-4143

www.zeiss.com/UVClean

Follow us: Instagram: @ZEISSVisionCare_USA



Facebook: ZEISS Vision Care (US)



©2020 Carl Zeiss Vision Inc. Rev. 11/20

ZEISS UVClean Ultraviolet-C (UVC) Eyeglass Disinfection

Quick Start Guide



Seeing beyond



Seeing beyond



Figure 1

Getting Started

Unboxing the ZEISS UVClean

Carefully remove the ZEISS UVClean (Figure 1) from the box and place on a secure surface. Locate and remove power cord, box with UVC bulbs, Bulb End Caps and gloves from the packaging. Retain all packaging materials for future use.

Installing UVC bulbs and end caps

Prior to installing a UVC bulb, please add a Bulb End Cap to both ends of the bulb (Figure 2). The round part should face toward the middle of the bulb. Be sure to do this while wearing the provided gloves. Please note that the Lid Bulb End Caps should be used together on the bulb for the lid.

Open the ZEISS UVClean lid and locate the four bulb mounts inside the device. One bulb is located in the top lid and the remaining three are positioned on the sides and in the middle of the chamber. (Figure 3) Wearing the provided gloves, align the two end pins with the slots on the bulb mounts. (Figure 4) Push the pins fully into the spring-load mounts and twist the bulb ¼ turn. The pins will click into place. Repeat for the remaining three bulbs. After installing the bulbs, slide each cap outward toward the wall of the chamber. (Figure 5) Install all four bulbs at the same time and prior to proceeding to the next step.

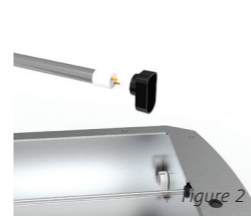


Figure 2

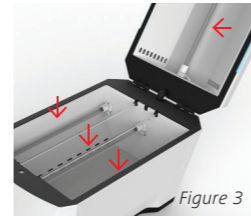


Figure 3

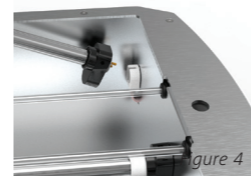


Figure 4

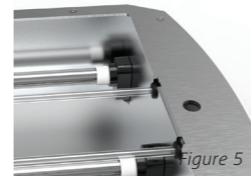


Figure 5

NOTE: Always use extreme caution when handling UVC bulbs. Only hold the bulb by the white end caps and not the glass tube.

Powering the ZEISS UVClean

Insert the power cord into the back of the device (Figure 6) and plug the other end into any standard wall outlet. LED lights along the lid will illuminate solid blue.

NOTE: Designed and extensively tested for the disinfection of ophthalmic frames and lenses. UVC is extremely harmful to living organisms and may cause damage to other objects placed in this device. Please use extreme caution when using this device for any non-tested objects as severe damage to the device and/or object and injury to the operator may result if misused.

NOTE: Only use the power cord supplied with the ZEISS UVClean.



Figure 6